

TOWN PLANNING DRAWINGS

Apartment Development

4-8 Sutton Street, Redcliffe, QLD, 4020

KEY PROPOSAL STATISTICS - MULTIPLE DWELLING			
Site Area	1,216.47	sqm	
Site Cover (Podium)	699.89	sqm(57.3%)	(56.3% Approved)
No. of Apartments			
Level 2	5 x 2	Bedrooms Apartments	
Level 3	5 x 2	Bedrooms Apartments	
Level 4	4 x 3	Bedrooms Apartments	
Level 5	4 x 3	Bedrooms Apartments	
Level 6	3 x 3	Bedrooms Apartments	
Level 7	3 x 3	Bedrooms Aparmtents	
Level 8	2 x 4	Bedrooms Apartments	
Landscape Area		325	sqm
Open Space and Recreational Area			
Ground	395	sqm	
Level 2	142	sqm	
Level 3	67	sqm	
Level 4	55	sqm	
Level 5	55	sqm	
Level 6	70	sqm	
Level 7	70	sqm	
Level 8	113	sqm	
Car Spaces - Resident	39		
Car Spaces - Visitor	3		
Total Car Spaces Proposed		42	



TOWN PLANNING

General Notes

This drawing is Copyright © Any design or drawing is not to be reproduced, either in whole or part, without written permission by Hayes Anderson Lynch Architects Pty. Ltd.
Confirm all dimensions on site.
Do not scale off drawings.
All levels are approximate only and are subject to confirmation by licenced surveyor.
All workmanship, materials and construction to comply with the Queensland Building Act 1975, the Queensland Development Code, the Building Code of Australia 2019, Premises Standard and AS1428.1.
Work to be carried out in a neat and appropriate manner.
Where ambiguities or discrepancies exist, Hayes Anderson Lynch Architects Pty. Ltd. shall be contacted for clarification.

LEGEND

B	Basin		
BAL	Balustrade (refer types)		
Bath	Bathroom		
BC	Barge capping		
BG	Box gutter		
CCL	Column		
Conc.	Concrete		
CT	Cook top		
DCW	Discontinuous wall		
DP	Downpipe (Refer Hydraulic Engineer's drawings)		
DR	Drawers		
DW	Dishwasher location		
EG	Eaves gutter		
F	Refrigerator position		
FL	Structural floor level		
FW	Floor waste gully		
GB	Garden bed		
HR	Selected handrail		
L	Linen cupboard		
OG	Obscure glass		
OF	Overflow		
P	Post		
Pty	Partly		
RD	Roller door		
RW	Retaining wall (Refer Structural Engineer's drawings)		
Robe	Wardrobe		
S	Sink		
SD	Spoon Drain		
SH	Sunhood		
SHR	Shower		
SP	Splitter		
SPR	Spreader		
ST	Slope top with range hood over		
SW	Stormwater (Refer Civil Engineer's drawings)		
T	Laundry tub		
TB	Timber battens		
TG	Trench grate		
TGSis	Tactile Ground Surface Indicator		
WC	Toilet		
WM	Washing machine location		
WO	Wall oven		

06.11.20	O	RFI response	EA
05.11.20	N	RFI response	EA
22.10.20	M	RFI response	EA
13.10.20	L	RFI response	EA
03.09.20	K	RFI response	EA
26.08.20	J	Prelim RFI response	EA
21.08.20	H	Prelim RFI response	EA
11.06.20	G	Client Issue	EA

Date	Issue Details	Checked
------	---------------	---------



ARCHITECTS
TOWN PLANNERS
INTERIOR DESIGNERS

3 / 709 MAIN STREET
KANGAROO POINT QLD 4169

P + 61 7 3 8 5 2 3 1 9 0
E reception@halarchitects.com.au
W www.halarchitects.com.au

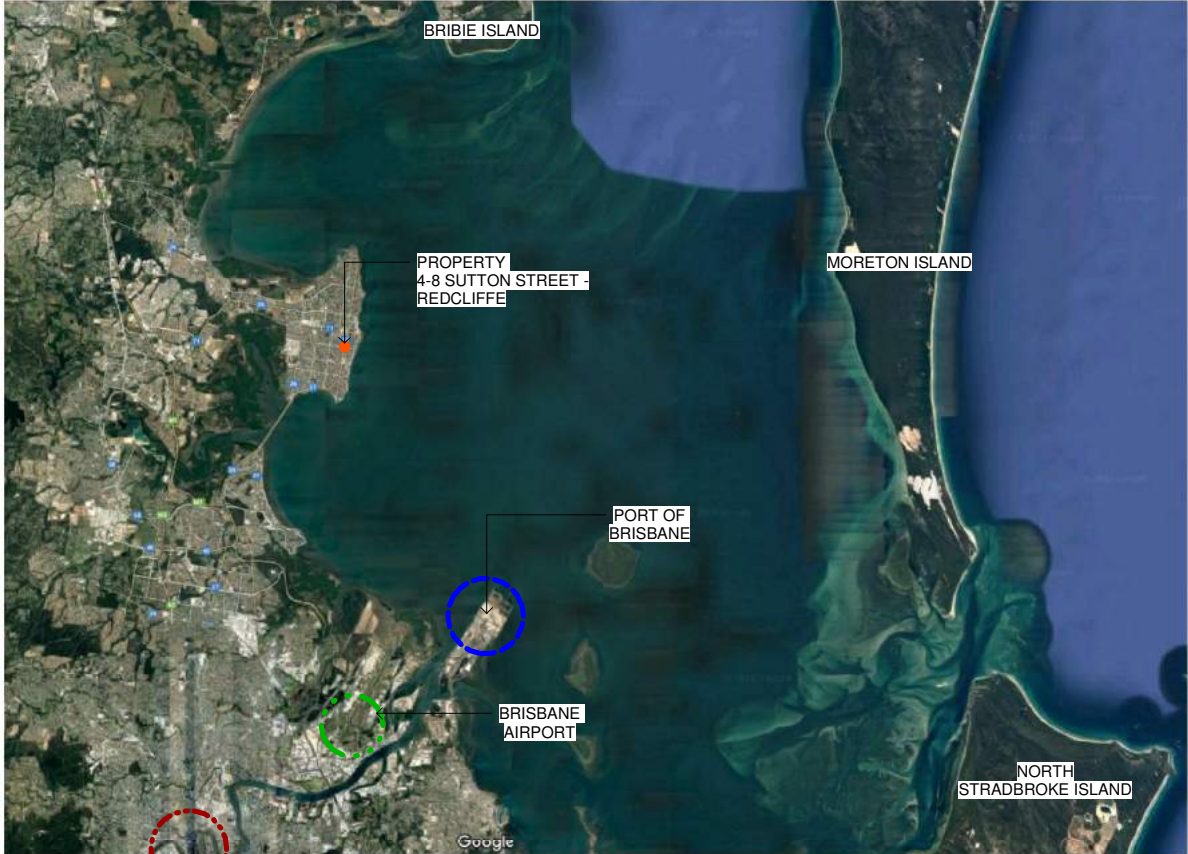


Project
Apartment Development
4-8 Sutton Street, Redcliffe, QLD

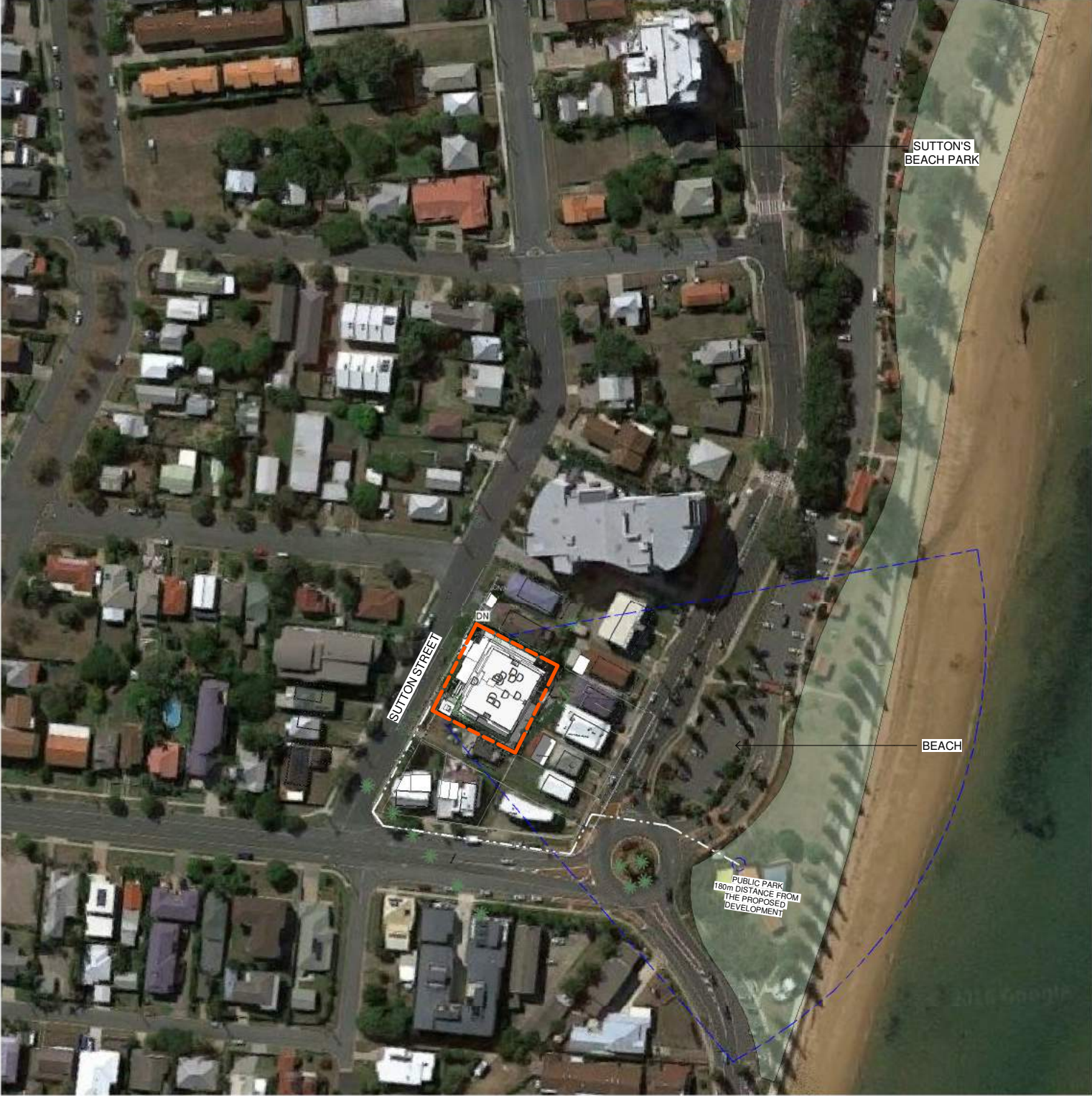
Drawing Title

Coversheet

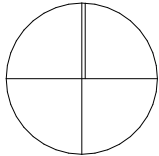
Scale @ A3	Drawn: RH, TN	Checked: EA
Project Number H3893SUT	Drawing Number TP001	Issue O



BRISBANE
CBD



N



Context Plan

TOWN PLANNING

General Notes

This drawing is Copyright © Any design or drawing is not to be reproduced, either in whole or part, without written permission by Hayes Anderson Lynch Architects Pty. Ltd. Confirm all dimensions on site. Do not scale off drawings. All levels are approximate only and are subject to confirmation by licenced surveyor. All workmanship, materials and construction to comply with the Queensland Building Act 1975, the Queensland Development Code, the Building Code of Australia 2019, Premises Standard and AS1428.1. Work to be carried out in a neat and appropriate manner. Where ambiguities or discrepancies exist, Hayes Anderson Lynch Architects Pty. Ltd. shall be contacted for clarification.

LEGEND

B	Basin
BAL	Balustrade (refer types)
Bath	Bathub
BC	Barge capping
BG	Box gutter
COL	Column
Conc	Concrete
CT	Cook top
DCW	Discontinuous wall
DP	Downpipe (Refer Hydraulic Engineer's drawings)
DR	Drawers
DW	Dishwasher location
EG	Eaves gutter
F	Refrigerator position
FL	Structural floor level
FW	Floor waste gully
GB	Garden bed
HR	Selected handrail
L	Linen cupboard
OG	Obscure glass
OF	Overflow
P	Post
Pty	Parity
RD	Roller door
RW	Retaining wall (Refer Structural Engineer's drawings)
Robe	Wardrobe
S	Sink
SD	Spoon Drain
SH	Sunhood
SHR	Shower
SP	Splitter
SPR	Spreader
ST	Slope top with range hood over
SW	Stumpwater (Refer Civil Engineer's drawings)
T	Laundry tub
TB	Timber battens
TG	Trench grate
TGSis	Tactile Ground Surface Indicator
WC	Toilet
WM	Washing machine location
WO	Wall oven

06.11.20	O	RFI response	EA
05.11.20	N	RFI response	EA
22.10.20	M	RFI response	EA
13.10.20	L	RFI response	EA
03.09.20	K	RFI response	EA
26.08.20	J	Prelim RFI response	EA
21.08.20	H	Prelim RFI response	EA
11.06.20	G	Client Issue	EA

Date	Issue Details	Checked
------	---------------	---------

HAL
HAYES
ANDERSON
LYNCH
ARCHITECTS PTY LTD

ARCHITECTS
TOWN PLANNERS
INTERIOR DESIGNERS

3 / 709 MAIN STREET
KANGAROO POINT QLD 4169

P + 61 7 3 8 5 2 3 1 9 0
E reception@halarchitects.com.au
W www.halarchitects.com.au



Project
Apartment Development
4-8 Sutton Street, Redcliffe, QLD

Drawing Title
Context Plan

Scale @ A3	Drawn: RH, TN	Checked: EA
Project Number H3893SUT	Drawing Number TP002	Issue O

NOTE:
Boundary, contours, levels, and site services information is shown indicatively only, based on eBimap. It is subject to confirmation by a licensed Surveyor in the form of an Identification Survey

SITE INFORMATION

Site Area: 1,216.48m²
4, 6, 8 Sutton Street
Redcliffe, QLD, 4020
Lot 417,418 & 419 on RP 30380

TOWN PLANNING

General Notes

This drawing is Copyright © Any design or drawing is not to be reproduced, either in whole or part, without written permission by Hayes Anderson Lynch Architects Pty. Ltd.
Confirm all dimensions on site.
Do not scale off drawings.
All levels are approximate only and are subject to confirmation by licenced surveyor.
All workmanship, materials and construction to comply with the Queensland Building Act 1975, the Queensland Development Code, the Building Code of Australia 2019, Premises Standard and AS1428.1.
Work to be carried out in a neat and appropriate manner.
Where ambiguities or discrepancies exist, Hayes Anderson Lynch Architects Pty. Ltd. shall be contacted for clarification.

LEGEND

B	Basin
BAL	Balustrade (refer types)
Bath	Bathub
BC	Barge capping
BG	Box gutter
COL	Column
Conc	Concrete
CT	Cook top
DCW	Discontinuous wall
DP	Downpipe (Refer Hydraulic Engineer's drawings)
DR	Drawers
DW	Dishwasher location
EG	Eaves gutter
F	Refrigerator position
FL	Structural floor level
FW	Floor waste gully
GB	Garden bed
HR	Selected handrail
L	Linen cupboard
OG	Obscure glass
OF	Overflow
P	Post
Pty	Parity
RD	Roller door
RW	Retaining wall (Refer Structural Engineer's drawings)
Robe	Wardrobe
S	Sink
SD	Spoon Drain
SH	Sunhood
SHR	Shower
SP	Splitter
SPR	Spreader
ST	Stove top with range hood over
SW	Stormwater (Refer Civil Engineer's drawings)
T	Laundry tub
TB	Timber battens
TG	Trench grate
TGSis	Tactile Ground Surface Indicator
WC	Toilet
WM	Washing machine location
WO	Wall oven

06.11.20	O	RFI response	EA
05.11.20	N	RFI response	EA
22.10.20	M	RFI response	EA
13.10.20	L	RFI response	EA
03.09.20	K	RFI response	EA
26.08.20	J	Prelim RFI response	EA
21.08.20	H	Prelim RFI response	EA
11.06.20	G	Client Issue	EA

Date	Issue Details	Checked
------	---------------	---------



ARCHITECTS
TOWN PLANNERS
INTERIOR DESIGNERS

3 / 709 MAIN STREET
KANGAROO POINT QLD 4169

P + 61 7 3852 3190
E reception@halarchitects.com.au
W www.halarchitects.com.au

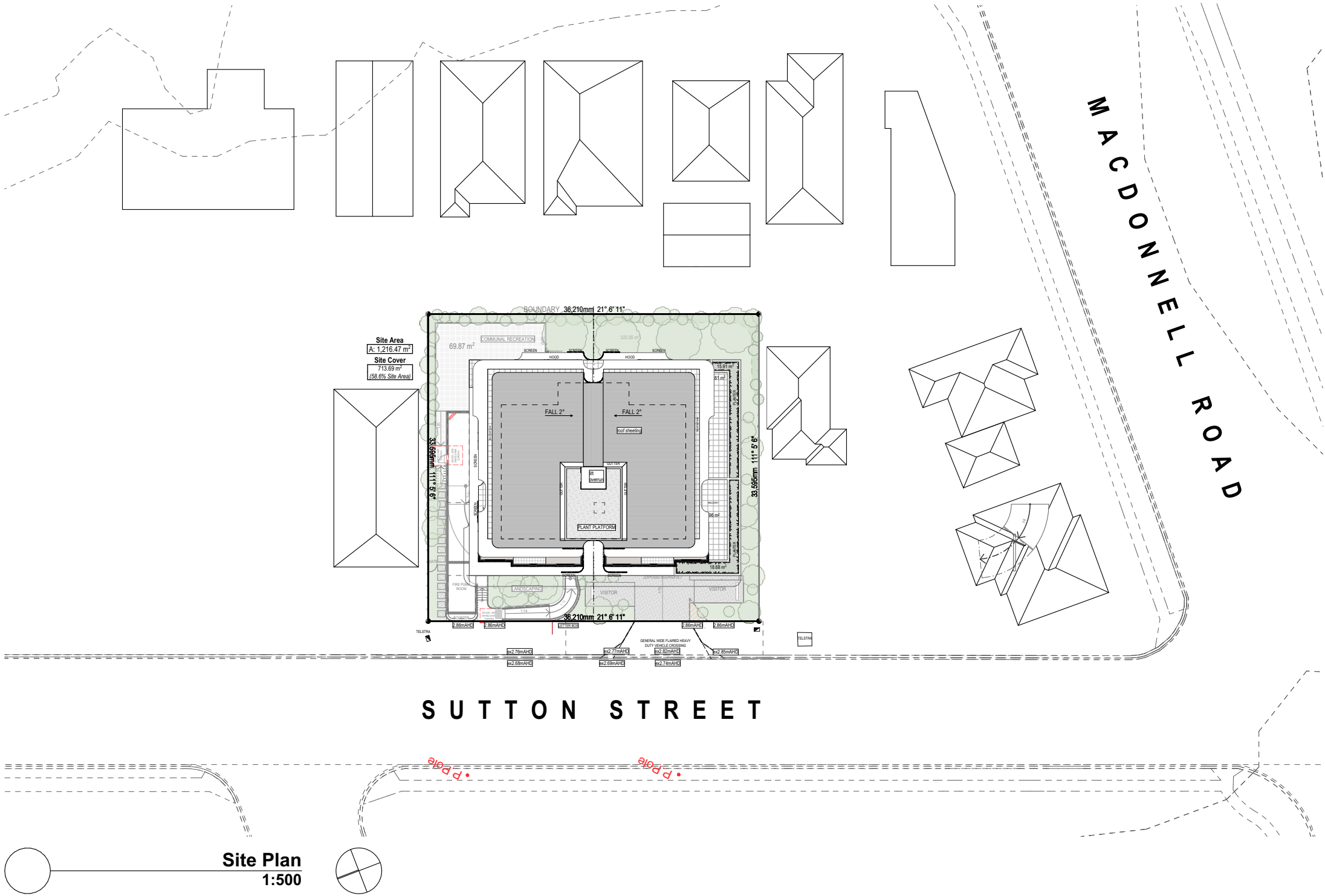


Project
Apartment Development
4-8 Sutton Street, Redcliffe, QLD

Drawing Title
Site Plan

Scale @ A3	Drawn:	Checked:
1:500	RH, TN	EA
Project Number	Drawing Number	Issue
H3893SUT	TP101	O

NOTE:
These drawings are for TOWN PLANNING purposes only



Storey	Site Cover		
Ground	713.69	sqm(58%)	(49.9% Approved)
Level 1	699.89	sqm(57.3%)	(56.3% Approved)
Level 2	493.23	sqm(40.6%)	(39% Approved)
Level 3	486.46	sqm(40%)	(39% Approved)
Level 4	497.89	sqm(40.9%)	(40.5% Approved)
Level 5	497.89	sqm(40.9%)	(40.5% Approved)
Level 6	442.09	sqm(36.4%)	(34.4% Approved)
Level 7	442.09	sqm(36.4%)	(34.4% Approved)
Level 8	314.71	sqm(26%)	(34.4% Approved)

DA LEGEND

- APPROVED BLG ENVELOPE
--- APPROVED HOODS/AWNINGS

TOWN PLANNING

General Notes

This drawing is Copyright © Any design or drawing is not to be reproduced, either in whole or part, without written permission by Hayes Anderson Lynch Architects Pty. Ltd. Confirm all dimensions on site. Do not scale off drawings. All levels are approximate only and are subject to confirmation by licenced surveyor. All workmanship, materials and construction to comply with the Queensland Building Act 1975, the Queensland Development Code, the Building Code of Australia 2019, Premises Standard and AS1428.1. Work to be carried out in a neat and appropriate manner. Where ambiguities or discrepancies exist, Hayes Anderson Lynch Architects Pty. Ltd. shall be contacted for clarification.

LEGEND

B	Basin
BAL	Balustrade (refer types)
Bath	Bathub
BC	Barge capping
BG	Box gutter
COL	Column
Conc	Concrete
CT	Cook top
DCW	Discontinuous wall
DP	Downpipe (Refer Hydraulic Engineer's drawings)
DR	Drawers
DW	Dishwasher location
EG	Eaves gutter
F	Refrigerator position
FL	Structural floor level
FW	Floor waste gully
GB	Garden bed
HR	Selected handrail
L	Linon cupboard
OG	Obscure glass
OF	Overflow
P	Post
Pty	Parity
RD	Roller door
RW	Retaining wall (Refer Structural Engineer's drawings)
Robe	Wardrobe
S	Sink
SD	Spoon Drain
SH	Sunhood
SHR	Shower
SP	Splitter
SPR	Spreader
ST	Slope top with range hood over
SW	Stormwater (Refer Civil Engineer's drawings)
T	Laundry tub
TB	Timber battens
TG	French grate
TGSis	Tactile Ground Surface Indicator
WC	Toilet
WM	Washing machine location
WO	Wall oven

06.11.20	O	RFI response	EA
05.11.20	N	RFI response	EA
22.10.20	M	RFI response	EA
13.10.20	L	RFI response	EA
03.09.20	K	RFI response	EA
26.08.20	J	Prelim RFI response	EA
21.08.20	H	Prelim RFI response	EA
11.06.20	G	Client Issue	EA

Date	Issue Details	Checked
------	---------------	---------

HAYES ANDERSON LYNCH
ARCHITECTS PTY LTD
ARCHITECTS
TOWN PLANNERS
INTERIOR DESIGNERS

3 / 709 MAIN STREET
KANGAROO POINT QLD 4169

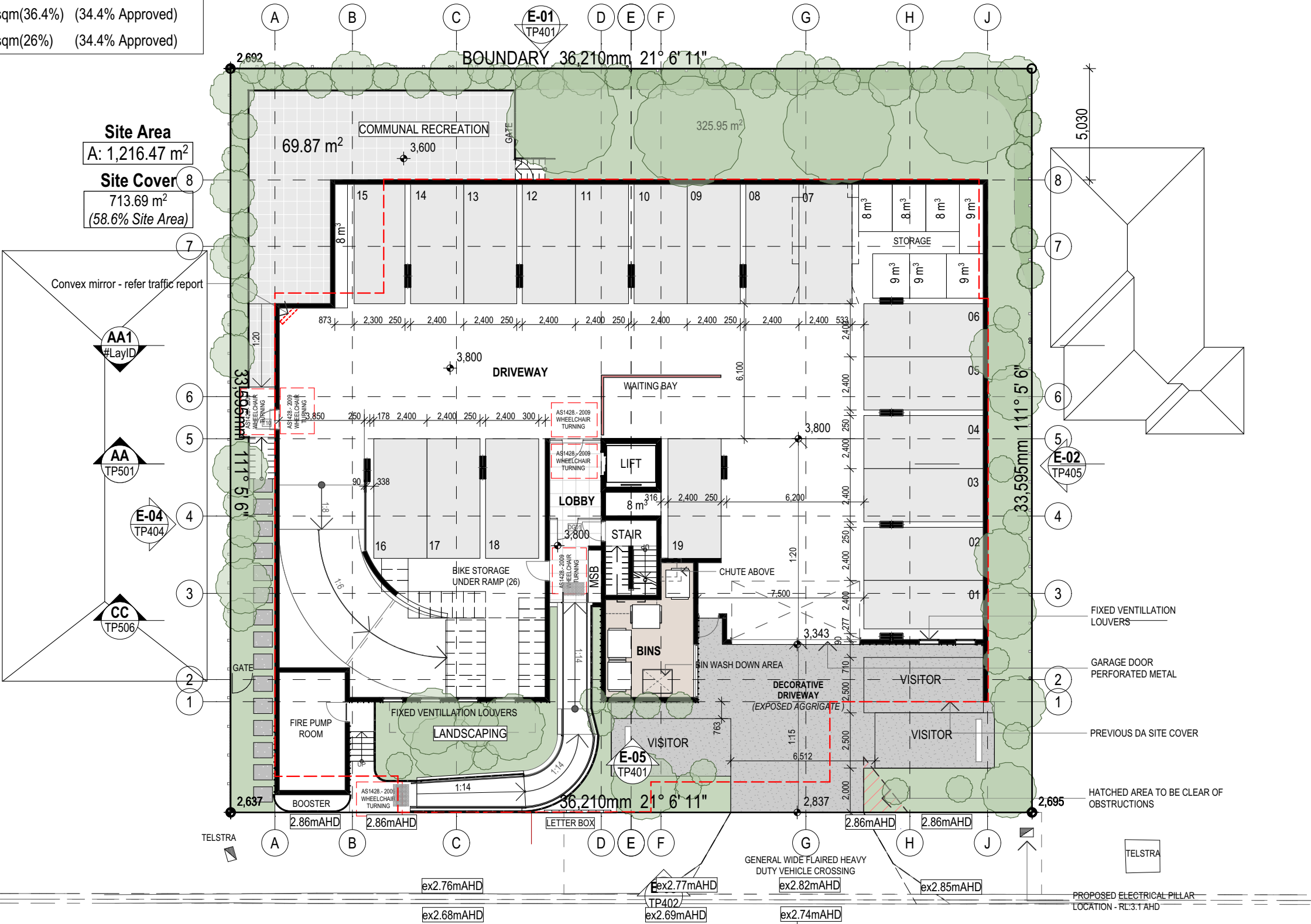
P + 61 7 3 8 5 2 3 1 9 0
E reception@halarchitects.com.au
W www.halarchitects.com.au



Project
Apartment Development
4-8 Sutton Street, Redcliffe, QLD

Drawing Title
Ground

Scale @ A3	Drawn:	Checked:
1:200	RH, TN	EA
Project Number	Drawing Number	Issue
H3893SUT	TP201	O



Site Area
A: 1,216.47 m²
Site Cover
713.69 m²
(58.6% Site Area)

Convex mirror - refer traffic report

AA1
#LayID

AA
TP501

E-04
TP404

CC
TP506

Ground
1:200

DA LEGEND

- APPROVED BLG ENVELOPE
- APPROVED HOODS/AWNINGS

TOWN PLANNING

General Notes

This drawing is Copyright © Any design or drawing is not to be reproduced, either in whole or part, without written permission by Hayes Anderson Lynch Architects Pty. Ltd. Confirm all dimensions on site. Do not scale off drawings. All levels are approximate only and are subject to confirmation by licenced surveyor. All workmanship, materials and construction to comply with the Queensland Building Act 1975, the Queensland Development Code, the Building Code of Australia 2019, Premises Standard and AS1428.1. Work to be carried out in a neat and appropriate manner. Where ambiguities or discrepancies exist, Hayes Anderson Lynch Architects Pty. Ltd. shall be contacted for clarification.

LEGEND

- BAL Balustrade (refer types)
- BATH Bath
- BC Barge capping
- BG Box gutter
- COL Column
- Conc Concrete
- CT Cook top
- DCW Discontinuous wall
- DP Downpipe (Refer Hydraulic Engineer's drawings)
- DR Drawers
- DW Dishwasher location
- EG Eaves gutter
- F Refrigerator position
- FL Structural floor level
- FW Floor waste gully
- GB Garden bed
- HR Selected handrail
- L Linen cupboard
- OG Obscure glass
- OF Overflow
- P Post
- Pty Parity
- RD Roller door
- RW Retaining wall (Refer Structural Engineer's drawings)
- Robe Wardrobe
- S Sink
- SD Spoon Drain
- SH Sunhood
- SHR Shower
- SP Splitter
- SPR Spreader
- ST Stove top with range hood over
- SW Stormwater (Refer Civil Engineer's drawings)
- T Laundry tub
- TB Timber battens
- TG Trench grate
- TGSis Tactile Ground Surface Indicator
- WC Toilet
- WM Washing machine location
- WO Wall oven

06.11.20	O	RFI response	EA
05.11.20	N	RFI response	EA
22.10.20	M	RFI response	EA
13.10.20	L	RFI response	EA
03.09.20	K	RFI response	EA
26.08.20	J	Prelim RFI response	EA
21.08.20	H	Prelim RFI response	EA
11.06.20	G	Client Issue	EA

Date	Issue Details	Checked
------	---------------	---------



ARCHITECTS
TOWN PLANNERS
INTERIOR DESIGNERS

3 / 709 MAIN STREET
KANGAROO POINT QLD 4169

P + 61 7 3852 3190
E reception@halarchitects.com.au
W www.halarchitects.com.au



Project
Apartment Development
4-8 Sutton Street, Redcliffe, QLD

Drawing Title
Level 1

Scale @ A3	Drawn:	Checked:
1:200	RH, TN	EA
Project Number	Drawing Number	Issue
H3893SUT	TP202	O



DA LEGEND

- APPROVED BLG ENVELOPE
- APPROVED HOODS/AWNINGS

TOWN PLANNING

General Notes

This drawing is Copyright © Any design or drawing is not to be reproduced, either in whole or part, without written permission by Hayes Anderson Lynch Architects Pty. Ltd. Confirm all dimensions on site. Do not scale off drawings. All levels are approximate only and are subject to confirmation by licenced surveyor. All workmanship, materials and construction to comply with the Queensland Building Act 1975, the Queensland Development Code, the Building Code of Australia 2019, Premises Standard and AS1428.1. Work to be carried out in a neat and appropriate manner. Where ambiguities or discrepancies exist, Hayes Anderson Lynch Architects Pty. Ltd. shall be contacted for clarification.

LEGEND

- BAL Balustrade (refer types)
- BATH Bath
- BC Barge capping
- BG Box gutter
- COL Column
- Conc Concrete
- CT Cook top
- DCW Discontinuous wall
- DP Downpipe (Refer Hydraulic Engineer's drawings)
- DR Drawers
- DW Dishwasher location
- EG Eaves gutter
- F Refrigerator position
- FL Structural floor level
- FW Floor waste gully
- GB Garden bed
- HR Selected handrail
- L Linen cupboard
- OG Obscure glass
- OF Overflow
- P Post
- Pty Parity
- RD Roller door
- RW Retaining wall (Refer Structural Engineer's drawings)
- Robe Wardrobe
- S Sink
- SD Spoon Drain
- SH Sunhood
- SHR Shower
- SP Splitter
- SPR Spreader
- ST Stove top with range hood over
- SW Stormwater (Refer Civil Engineer's drawings)
- T Laundry tub
- TB Timber battens
- TG French grate
- TGSis Tactile Ground Surface Indicator
- WC Toilet
- WM Washing machine location
- WO Wall oven

06.11.20	O	RFI response	EA
05.11.20	N	RFI response	EA
22.10.20	M	RFI response	EA
13.10.20	L	RFI response	EA
03.09.20	K	RFI response	EA
26.08.20	J	Prelim RFI response	EA
21.08.20	H	Prelim RFI response	EA
11.06.20	G	Client Issue	EA

Date	Issue Details	Checked
------	---------------	---------



ARCHITECTS
TOWN PLANNERS
INTERIOR DESIGNERS

3 / 709 MAIN STREET
KANGAROO POINT QLD 4169

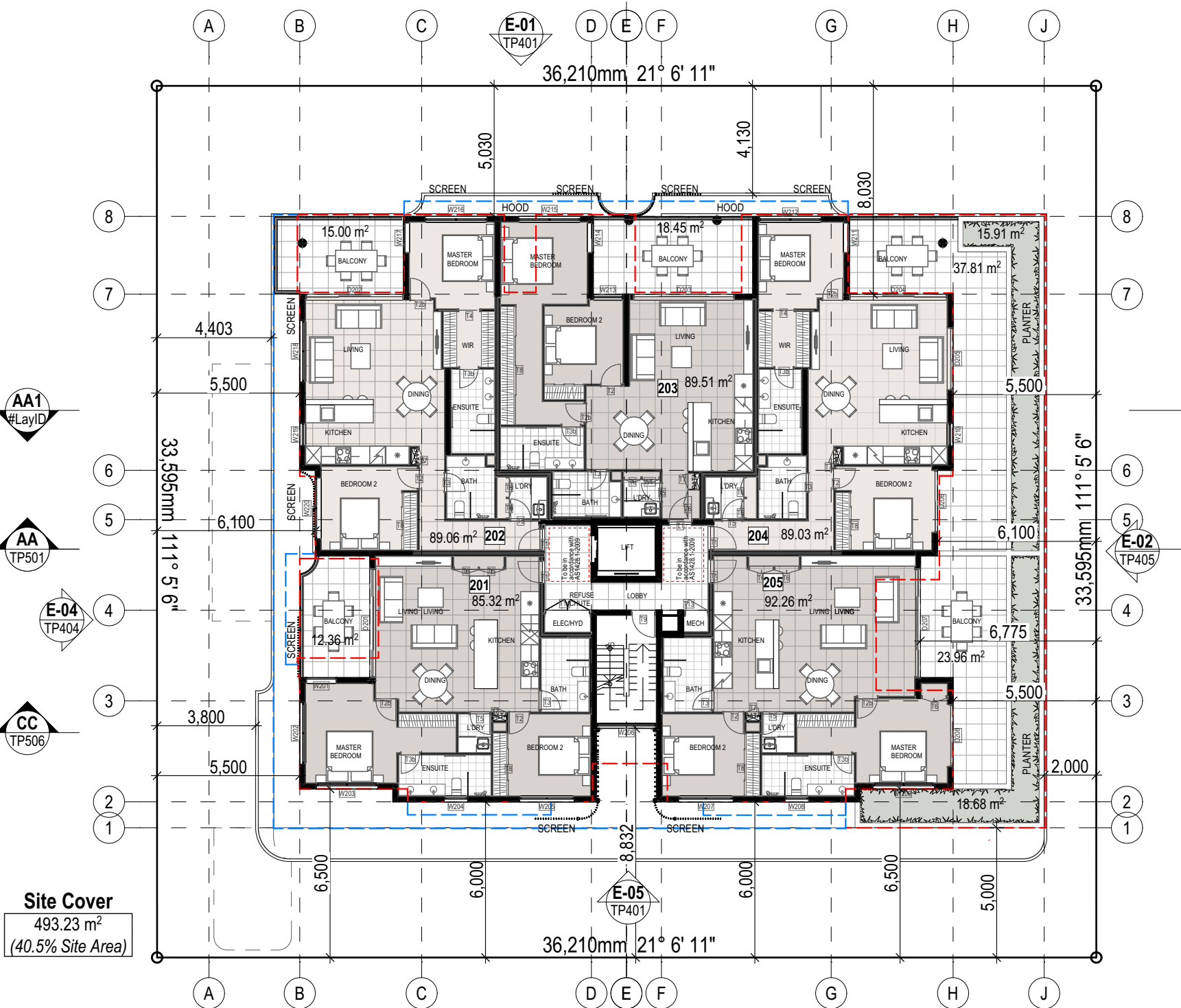
P + 61 7 3 8 5 2 3 1 9 0
E reception@halarchitects.com.au
W www.halarchitects.com.au



Project
Apartment Development
4-8 Sutton Street, Redcliffe, QLD

Drawing Title
Level 2

Scale @ A3	Drawn:	Checked:
1:200	RH, TN	EA
Project Number	Drawing Number	Issue
H3893SUT	TP203	O



Site Cover
493.23 m²
(40.5% Site Area)

Level 2
1:200

DA LEGEND

- APPROVED BLG ENVELOPE
- APPROVED HOODS/AWNINGS

TOWN PLANNING

General Notes

This drawing is Copyright © Any design or drawing is not to be reproduced, either in whole or part, without written permission by Hayes Anderson Lynch Architects Pty. Ltd.
Confirm all dimensions on site.
Do not scale off drawings.
All levels are approximate only and are subject to confirmation by licenced surveyor.
All workmanship, materials and construction to comply with the Queensland Building Act 1975, the Queensland Development Code, the Building Code of Australia 2019, Premises Standard and AS1428.1.
Work to be carried out in a neat and appropriate manner.
Where ambiguities or discrepancies exist, Hayes Anderson Lynch Architects Pty. Ltd. shall be contacted for clarification.

LEGEND

- B Basin
- BAL Balustrade (refer types)
- Bath Bath
- BC Barge capping
- BG Box gutter
- COL Column
- Conc Concrete
- CT Cook top
- DCW Discontinuous wall
- DP Downpipe (Refer Hydraulic Engineer's drawings)
- DR Drawers
- DW Dishwasher location
- EG Eaves gutter
- F Refrigerator position
- FL Structural floor level
- FW Floor waste gully
- GB Garden bed
- HR Selected handrail
- L Linen cupboard
- OG Obscure glass
- OF Overflow
- P Post
- Pty Parity
- RD Roller door
- RW Retaining wall (Refer Structural Engineer's drawings)
- Robe Wardrobe
- S Sink
- SD Spoon Drain
- SH Sunhood
- SHR Shower
- SP Splitter
- SPR Spreader
- ST Slope top with range hood over
- SW Stormwater (Refer Civil Engineer's drawings)
- T Laundry tub
- TB Timber battens
- TG French grate
- TGSis Tactile Ground Surface Indicator
- WC Toilet
- WM Washing machine location
- WO Wall oven

06.11.20	O	RFI response	EA
05.11.20	N	RFI response	EA
22.10.20	M	RFI response	EA
13.10.20	L	RFI response	EA
03.09.20	K	RFI response	EA
26.08.20	J	Prelim RFI response	EA
21.08.20	H	Prelim RFI response	EA
11.06.20	G	Client Issue	EA

Date	Issue Details	Checked
------	---------------	---------



ARCHITECTS
TOWN PLANNERS
INTERIOR DESIGNERS

3 / 709 MAIN STREET
KANGAROO POINT QLD 4169

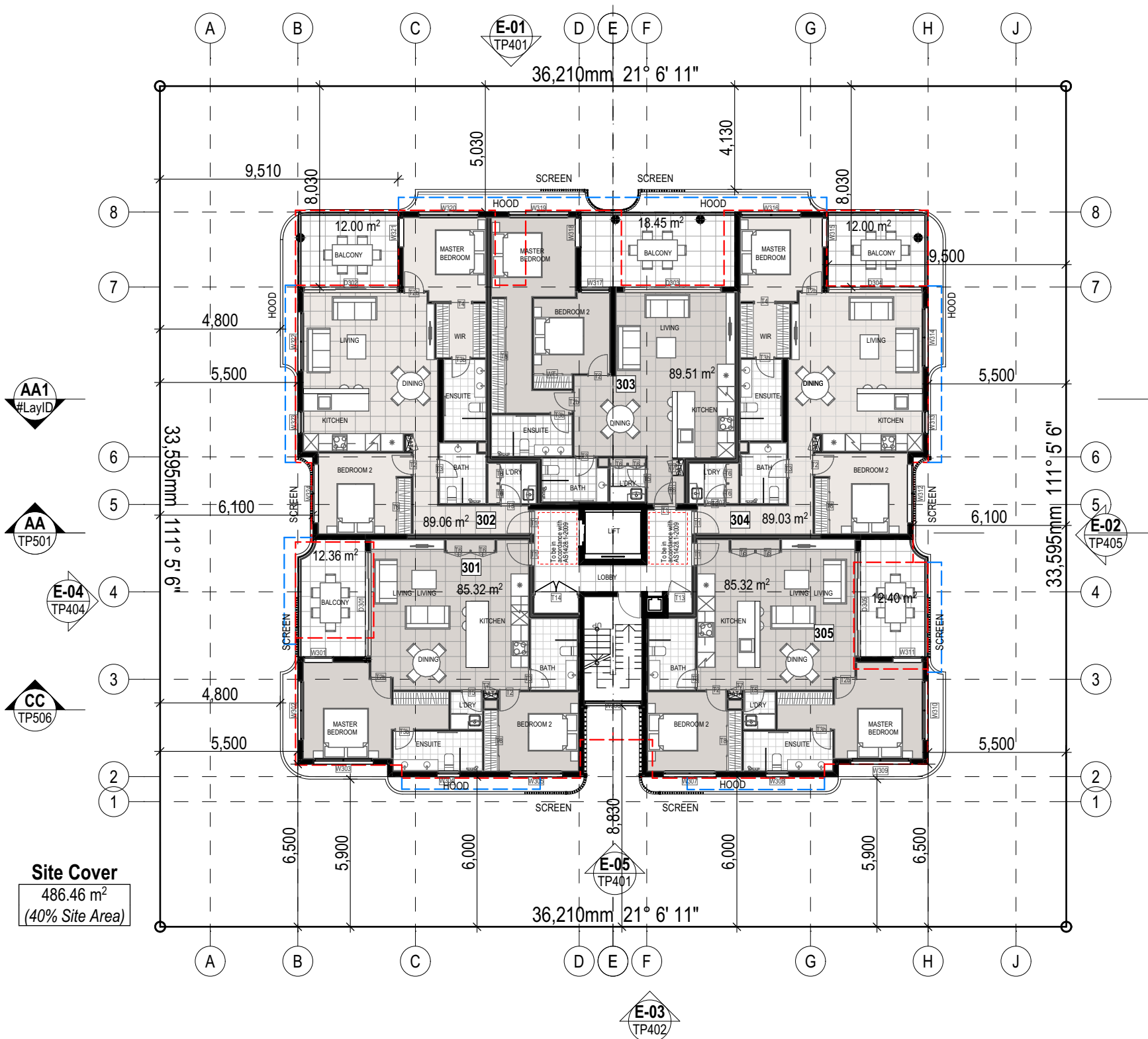
P + 61 7 3 8 5 2 3 1 9 0
E reception@halarchitects.com.au
W www.halarchitects.com.au



Project
Apartment Development
4-8 Sutton Street, Redcliffe, QLD

Drawing Title
Level 3

Scale @ A3	Drawn:	Checked:
1:200	RH, TN	EA
Project Number	Drawing Number	Issue
H3893SUT	TP204	O



Site Cover
486.46 m²
(40% Site Area)

Level 3
1:200

DA LEGEND

- APPROVED BLG ENVELOPE
- APPROVED HOODS/AWNINGS

TOWN PLANNING

General Notes

This drawing is Copyright © Any design or drawing is not to be reproduced, either in whole or part, without written permission by Hayes Anderson Lynch Architects Pty. Ltd. Confirm all dimensions on site. Do not scale off drawings. All levels are approximate only and are subject to confirmation by licenced surveyor. All workmanship, materials and construction to comply with the Queensland Building Act 1975, the Queensland Development Code, the Building Code of Australia 2019, Premises Standard and AS1428.1. Work to be carried out in a neat and appropriate manner. Where ambiguities or discrepancies exist, Hayes Anderson Lynch Architects Pty. Ltd. shall be contacted for clarification.

LEGEND

- B Basin
- BAL Balustrade (refer types)
- Bath Bath
- BC Barge capping
- BG Box gutter
- COL Column
- Conc Concrete
- CT Cook top
- DCW Discontinuous wall
- DP Downpipe (Refer Hydraulic Engineer's drawings)
- DR Drawers
- DW Dishwasher location
- EG Eaves gutter
- F Refrigerator position
- FL Structural floor level
- FW Floor waste gully
- GB Garden bed
- HR Selected handrail
- L Linen cupboard
- OG Obscure glass
- OF Overflow
- P Post
- Pty Pantry
- RD Roller door
- RW Retaining wall (Refer Structural Engineer's drawings)
- Robe Wardrobe
- S Sink
- SD Spoon Drain
- SH Sunhood
- SHR Shower
- SP Splitter
- SPR Spreader
- ST Slove top with range hood over
- SW Stormwater (Refer Civil Engineer's drawings)
- T Laundry tub
- TB Timber battens
- TG French grate
- TGSis Tactile Ground Surface Indicator
- WC Toilet
- WM Washing machine location
- WO Wall oven

06.11.20	O	RFI response	EA
05.11.20	N	RFI response	EA
22.10.20	M	RFI response	EA
13.10.20	L	RFI response	EA
03.09.20	K	RFI response	EA
26.08.20	J	Prelim RFI response	EA
21.08.20	H	Prelim RFI response	EA
11.06.20	G	Client Issue	EA

Date	Issue Details	Checked
------	---------------	---------



ARCHITECTS
TOWN PLANNERS
INTERIOR DESIGNERS

3 / 709 MAIN STREET
KANGAROO POINT QLD 4169

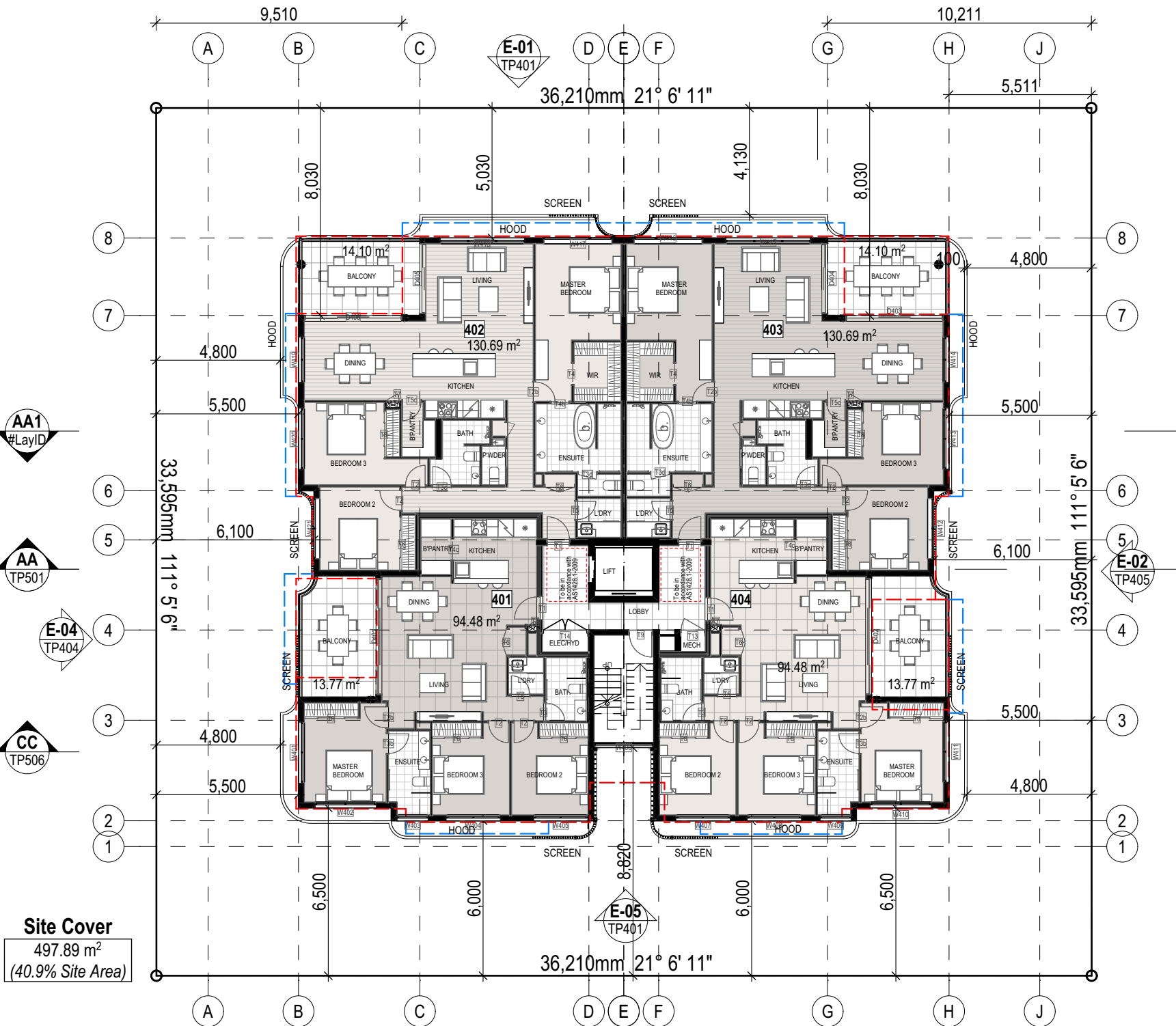
P + 61 7 3 8 5 2 3 1 9 0
E reception@halarchitects.com.au
W www.halarchitects.com.au



Project
Apartment Development
4-8 Sutton Street, Redcliffe, QLD

Drawing Title
Level 4

Scale @ A3	Drawn:	Checked:
1:200	RH, TN	EA
Project Number	Drawing Number	Issue
H3893SUT	TP205	O



Site Cover
497.89 m²
(40.9% Site Area)

Level 4
1:200

DA LEGEND

- APPROVED BLG ENVELOPE
- APPROVED HOODS/AWNINGS

TOWN PLANNING

General Notes

This drawing is Copyright © Any design or drawing is not to be reproduced, either in whole or part, without written permission by Hayes Anderson Lynch Architects Pty. Ltd. Confirm all dimensions on site. Do not scale off drawings. All levels are approximate only and are subject to confirmation by licenced surveyor. All workmanship, materials and construction to comply with the Queensland Building Act 1975, the Queensland Development Code, the Building Code of Australia 2019, Premises Standard and AS1428.1. Work to be carried out in a neat and appropriate manner. Where ambiguities or discrepancies exist, Hayes Anderson Lynch Architects Pty. Ltd. shall be contacted for clarification.

LEGEND

- B Basin
- BAL Balustrade (refer types)
- Bath Bath
- BC Barge capping
- BG Box gutter
- COL Column
- Conc Concrete
- CT Cook top
- DCW Discontinuous wall
- DP Downpipe (Refer Hydraulic Engineer's drawings)
- DR Drawers
- DW Dishwasher location
- EG Eaves gutter
- F Refrigerator position
- FL Structural floor level
- FW Floor waste gully
- GB Garden bed
- HR Selected handrail
- L Linen cupboard
- OG Obscure glass
- OF Overflow
- P Post
- Pty Parity
- RD Roller door
- RW Retaining wall (Refer Structural Engineer's drawings)
- Robe Wardrobe
- S Sink
- SD Spoon Drain
- SH Sunhood
- SHR Shower
- SP Splitter
- SPR Spreader
- ST Slove top with range hood over
- SW Stormwater (Refer Civil Engineer's drawings)
- T Laundry tub
- TB Timber battens
- TG French grate
- TGSis Tactile Ground Surface Indicator
- WC Toilet
- WM Washing machine location
- WO Wall oven

06.11.20	O	RFI response	EA
05.11.20	N	RFI response	EA
22.10.20	M	RFI response	EA
13.10.20	L	RFI response	EA
03.09.20	K	RFI response	EA
26.08.20	J	Prelim RFI response	EA
21.08.20	H	Prelim RFI response	EA
11.06.20	G	Client Issue	EA

Date	Issue Details	Checked
------	---------------	---------



ARCHITECTS
TOWN PLANNERS
INTERIOR DESIGNERS

3 / 709 MAIN STREET
KANGAROO POINT QLD 4169

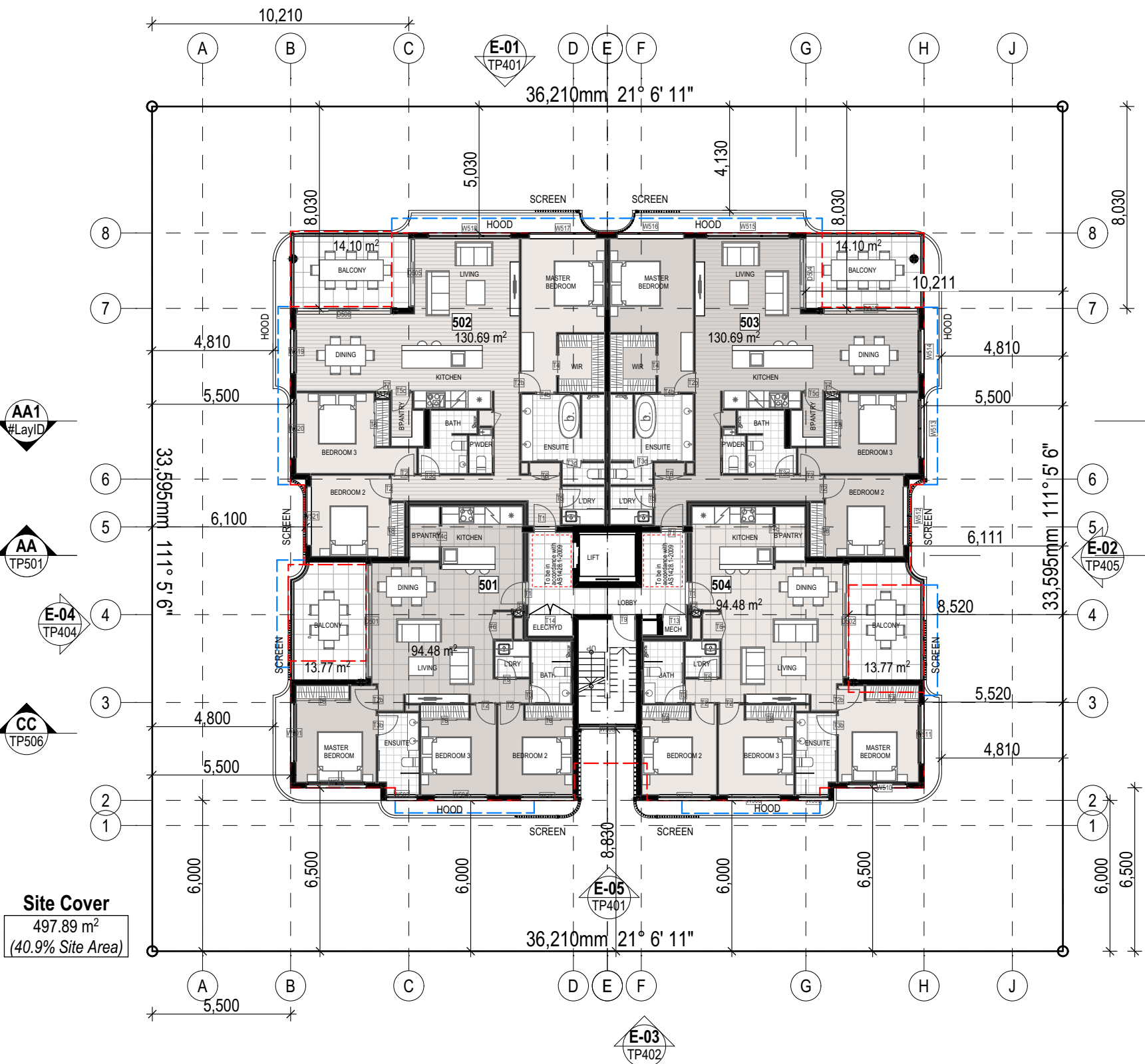
P + 61 7 3 8 5 2 3 1 9 0
E reception@halarchitects.com.au
W www.halarchitects.com.au



Project
Apartment Development
4-8 Sutton Street, Redcliffe, QLD

Drawing Title
Level 5

Scale @ A3	Drawn:	Checked:
1:200	RH, TN	EA
Project Number	Drawing Number	Issue
H3893SUT	TP206	O



Site Cover
497.89 m²
(40.9% Site Area)

Level 5
1:200

DA LEGEND

- APPROVED BLG ENVELOPE
- APPROVED HOODS/AWNINGS

TOWN PLANNING

General Notes

This drawing is Copyright © Any design or drawing is not to be reproduced, either in whole or part, without written permission by Hayes Anderson Lynch Architects Pty. Ltd.
Confirm all dimensions on site.
Do not scale off drawings.
All levels are approximate only and are subject to confirmation by licenced surveyor.
All workmanship, materials and construction to comply with the Queensland Building Act 1975, the Queensland Development Code, the Building Code of Australia 2019, Premises Standard and AS1428.1.
Work to be carried out in a neat and appropriate manner.
Where ambiguities or discrepancies exist, Hayes Anderson Lynch Architects Pty. Ltd. shall be contacted for clarification.

LEGEND

- B Basin
- BAL Balustrade (refer types)
- Bath Bath
- BC Barge capping
- BG Box gutter
- COL Column
- Conc Concrete
- CT Cook top
- DCW Discontinuous wall
- DP Downpipe (Refer Hydraulic Engineer's drawings)
- DR Drawers
- DW Dishwasher location
- EG Eaves gutter
- F Refrigerator position
- FL Structural floor level
- FW Floor waste gully
- GB Garden bed
- HR Selected handrail
- L Linen cupboard
- OG Obscure glass
- OF Overflow
- P Post
- Pty Parity
- RD Roller door
- RW Retaining wall (Refer Structural Engineer's drawings)
- Robe Wardrobe
- S Sink
- SD Spoon Drain
- SH Sunhood
- SHR Shower
- SP Splitter
- SPR Spreader
- ST Stove top with range hood over
- SW Stormwater (Refer Civil Engineer's drawings)
- T Laundry tub
- TB Timber battens
- TG Trench grate
- TGSIS Tactile Ground Surface Indicator
- WC Toilet
- WM Washing machine location
- WO Wall oven

06.11.20	O	RFI response	EA
05.11.20	N	RFI response	EA
22.10.20	M	RFI response	EA
13.10.20	L	RFI response	EA
03.09.20	K	RFI response	EA
26.08.20	J	Prelim RFI response	EA
21.08.20	H	Prelim RFI response	EA
11.06.20	G	Client Issue	EA

Date	Issue Details	Checked
------	---------------	---------



ARCHITECTS
TOWN PLANNERS
INTERIOR DESIGNERS

3 / 709 MAIN STREET
KANGAROO POINT QLD 4169

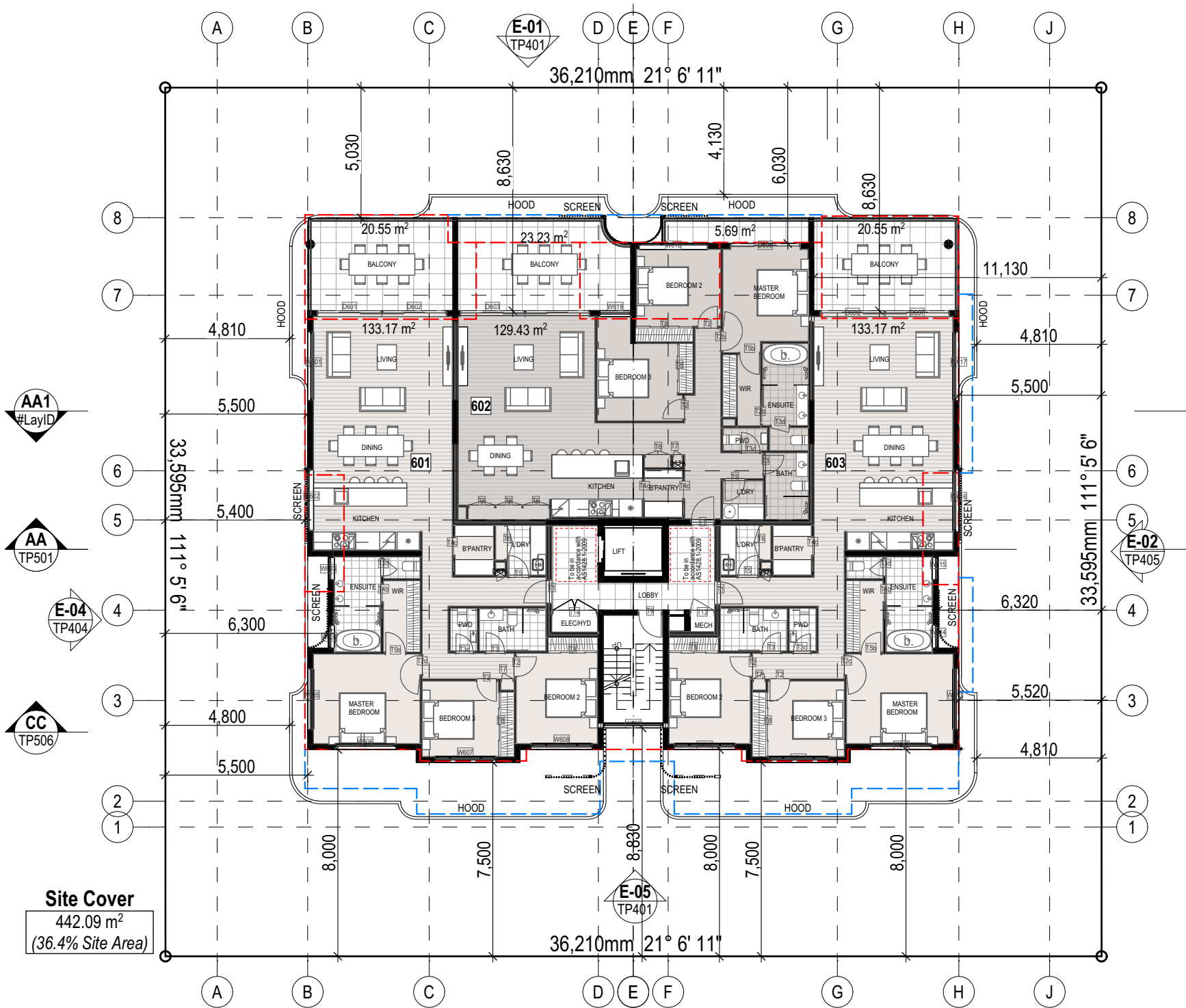
P + 61 7 3 8 5 2 3 1 9 0
E reception@halarchitects.com.au
W www.halarchitects.com.au



Project
Apartment Development
4-8 Sutton Street, Redcliffe, QLD

Drawing Title
Level 6

Scale @ A3	Drawn:	Checked:
1:200	RH, TN	EA
Project Number	Drawing Number	Issue
H3893SUT	TP207	O



Site Cover
442.09 m²
(36.4% Site Area)

Level 6
1:200

DA LEGEND

- APPROVED BLG ENVELOPE
- APPROVED HOODS/AWNINGS

TOWN PLANNING

General Notes

This drawing is Copyright © Any design or drawing is not to be reproduced, either in whole or part, without written permission by Hayes Anderson Lynch Architects Pty. Ltd.
Confirm all dimensions on site.
Do not scale off drawings.
All levels are approximate only and are subject to confirmation by licenced surveyor.
All workmanship, materials and construction to comply with the Queensland Building Act 1975, the Queensland Development Code, the Building Code of Australia 2019, Premises Standard and AS1428.1.
Work to be carried out in a neat and appropriate manner.
Where ambiguities or discrepancies exist, Hayes Anderson Lynch Architects Pty. Ltd. shall be contacted for clarification.

LEGEND

- B Basin
- BAL Balustrade (refer types)
- Bath Bath
- BC Barge capping
- BG Box gutter
- COL Column
- Conc Concrete
- CT Cook top
- DCW Discontinuous wall
- DP Downpipe (Refer Hydraulic Engineer's drawings)
- DR Drawers
- DW Dishwasher location
- EG Eaves gutter
- F Refrigerator position
- FL Structural floor level
- FW Floor waste gully
- GB Garden bed
- HR Selected handrail
- L Linen cupboard
- OG Obscure glass
- OF Overflow
- P Post
- Pty Pantry
- RD Roller door
- RW Retaining wall (Refer Structural Engineer's drawings)
- Robe Wardrobe
- S Sink
- SD Spoon Drain
- SH Sunhood
- SHR Shower
- SP Splitter
- SPR Spreader
- ST Stove top with range hood over
- SW Stormwater (Refer Civil Engineer's drawings)
- T Laundry tub
- TB Timber battens
- TG French grate
- TGSis Tactile Ground Surface Indicator
- WC Toilet
- WM Washing machine location
- WO Wall oven

06.11.20	O	RFI response	EA
05.11.20	N	RFI response	EA
22.10.20	M	RFI response	EA
13.10.20	L	RFI response	EA
03.09.20	K	RFI response	EA
26.08.20	J	Prelim RFI response	EA
21.08.20	H	Prelim RFI response	EA
11.06.20	G	Client Issue	EA

Date	Issue Details	Checked
------	---------------	---------



ARCHITECTS
TOWN PLANNERS
INTERIOR DESIGNERS

3 / 709 MAIN STREET
KANGAROO POINT QLD 4169

P + 61 7 3 8 5 2 3 1 9 0
E reception@halarchitects.com.au
W www.halarchitects.com.au



Project
Apartment Development
4-8 Sutton Street, Redcliffe, QLD

Drawing Title
Level 7

Scale @ A3	Drawn:	Checked:
1:200	RH, TN	EA
Project Number	Drawing Number	Issue
H3893SUT	TP208	O



DA LEGEND

- APPROVED BLG ENVELOPE
- APPROVED HOODS/AWNINGS

TOWN PLANNING

General Notes

This drawing is Copyright © Any design or drawing is not to be reproduced, either in whole or part, without written permission by Hayes Anderson Lynch Architects Pty. Ltd.
Confirm all dimensions on site.
Do not scale off drawings.
All levels are approximate only and are subject to confirmation by licenced surveyor.
All workmanship, materials and construction to comply with the Queensland Building Act 1975, the Queensland Development Code, the Building Code of Australia 2019, Premises Standard and AS1428.1.
Work to be carried out in a neat and appropriate manner.
Where ambiguities or discrepancies exist, Hayes Anderson Lynch Architects Pty. Ltd. shall be contacted for clarification.

LEGEND

- B Basin
- BAL Balustrade (refer types)
- Bath Bath
- BC Barge capping
- BG Box gutter
- COL Column
- Conc Concrete
- CT Cook top
- DCW Discontinuous wall
- DP Downpipe (Refer Hydraulic Engineer's drawings)
- DR Drawers
- DW Dishwasher location
- EG Eaves gutter
- F Refrigerator position
- FL Structural floor level
- FW Floor waste gully
- GB Garden bed
- HR Selected handrail
- L Linen cupboard
- OG Obscure glass
- OF Overflow
- P Post
- Pty Pantry
- RD Roller door
- RW Retaining wall (Refer Structural Engineer's drawings)
- Robe Wardrobe
- S Sink
- SD Spoon Drain
- SH Sunhood
- SHR Shower
- SP Splitter
- SPR Spreader
- ST Stove top with range hood over
- SW Stormwater (Refer Civil Engineer's drawings)
- T Laundry tub
- TB Timber battens
- TG French grate
- TGSI Tactile Ground Surface Indicator
- WC Toilet
- WM Washing machine location
- WO Wall oven

06.11.20	O	RFI response	EA
05.11.20	N	RFI response	EA
22.10.20	M	RFI response	EA
13.10.20	L	RFI response	EA
03.09.20	K	RFI response	EA
26.08.20	J	Prelim RFI response	EA
21.08.20	H	Prelim RFI response	EA
11.06.20	G	Client Issue	EA

Date	Issue Details	Checked
------	---------------	---------



ARCHITECTS
TOWN PLANNERS
INTERIOR DESIGNERS

3 / 709 MAIN STREET
KANGAROO POINT QLD 4169

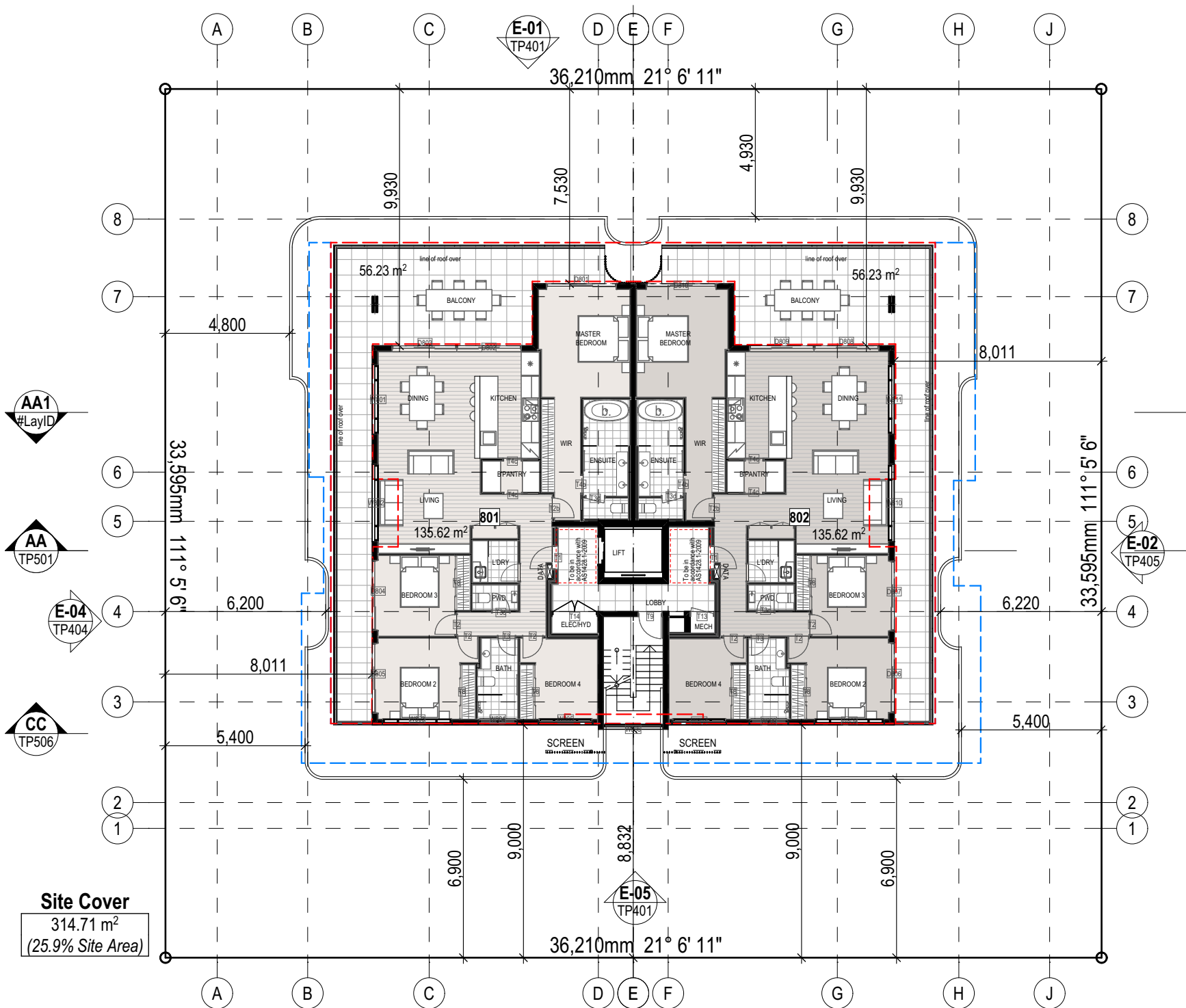
P + 61 7 3 8 5 2 3 1 9 0
E reception@halarchitects.com.au
W www.halarchitects.com.au



Project
Apartment Development
4-8 Sutton Street, Redcliffe, QLD

Drawing Title
Level 8

Scale @ A3	Drawn:	Checked:
1:200	RH, TN	EA
Project Number	Drawing Number	Issue
H3893SUT	TP209	O



Site Cover
314.71 m²
(25.9% Site Area)

Level 8
1:200

DA LEGEND

- APPROVED BLG ENVELOPE
- APPROVED HOODS/AWNINGS

TOWN PLANNING

General Notes

This drawing is Copyright © Any design or drawing is not to be reproduced, either in whole or part, without written permission by Hayes Anderson Lynch Architects Pty. Ltd. Confirm all dimensions on site. Do not scale off drawings. All levels are approximate only and are subject to confirmation by licenced surveyor. All workmanship, materials and construction to comply with the Queensland Building Act 1975, the Queensland Development Code, the Building Code of Australia 2019, Premises Standard and AS1428.1. Work to be carried out in a neat and appropriate manner. Where ambiguities or discrepancies exist, Hayes Anderson Lynch Architects Pty. Ltd. shall be contacted for clarification.

LEGEND

- B Basin
- BAL Balustrade (refer types)
- Bath Bathtub
- BC Barge capping
- BG Box gutter
- COL Column
- Conc Concrete
- CT Cook top
- DCW Discontinuous wall
- DP Downpipe (Refer Hydraulic Engineer's drawings)
- DR Drawers
- DW Dishwasher location
- EG Eaves gutter
- F Refrigerator position
- FL Structural floor level
- FW Floor waste gully
- GB Garden bed
- HR Selected handrail
- L Linen cupboard
- OG Obscure glass
- OF Overflow
- P Post
- Pty Parity
- RD Roller door
- RW Retaining wall (Refer Structural Engineer's drawings)
- Robe Wardrobe
- S Sink
- SD Spoon Drain
- SH Sunhood
- SHR Shower
- SP Spitter
- SPR Spreader
- ST Stove top with range hood over
- SW Stormwater (Refer Civil Engineer's drawings)
- T Laundry tub
- TB Timber battens
- TG Trench grate
- TGSis Tactile Ground Surface Indicator
- WC Toilet
- WM Washing machine location
- WO Wall oven

06.11.20	O	RFI response	EA
05.11.20	N	RFI response	EA
22.10.20	M	RFI response	EA
13.10.20	L	RFI response	EA
03.09.20	K	RFI response	EA
26.08.20	J	Prelim RFI response	EA
21.08.20	H	Prelim RFI response	EA
11.06.20	G	Client Issue	EA

Date	Issue Details	Checked
------	---------------	---------



**HAYES
ANDERSON
LYNCH**
ARCHITECTS PTY LTD

ARCHITECTS
TOWN PLANNERS
INTERIOR DESIGNERS

3 / 709 MAIN STREET
KANGAROO POINT QLD 4169

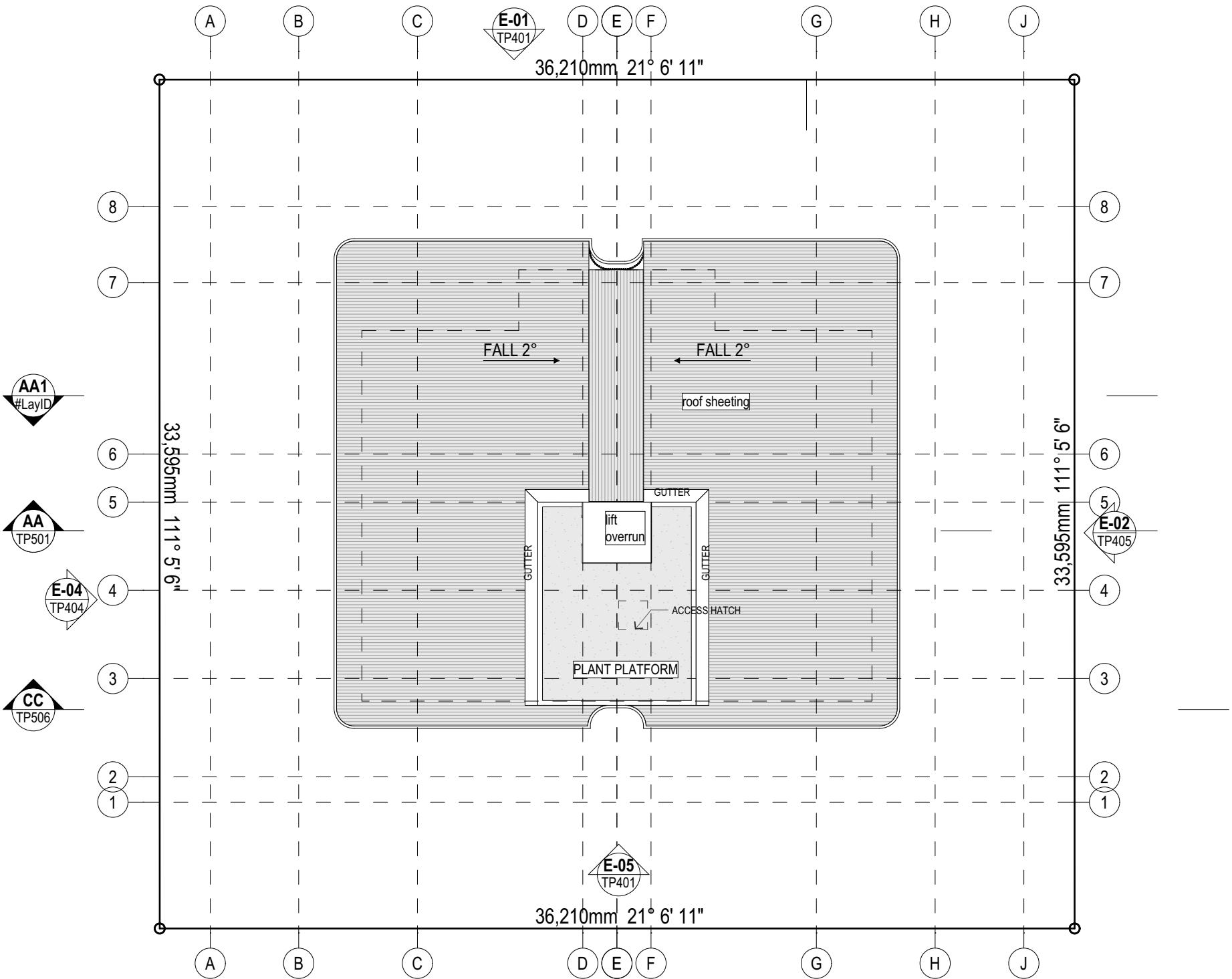
P + 61 7 3 8 5 2 3 1 9 0
E reception@halarchitects.com.au
W www.halarchitects.com.au

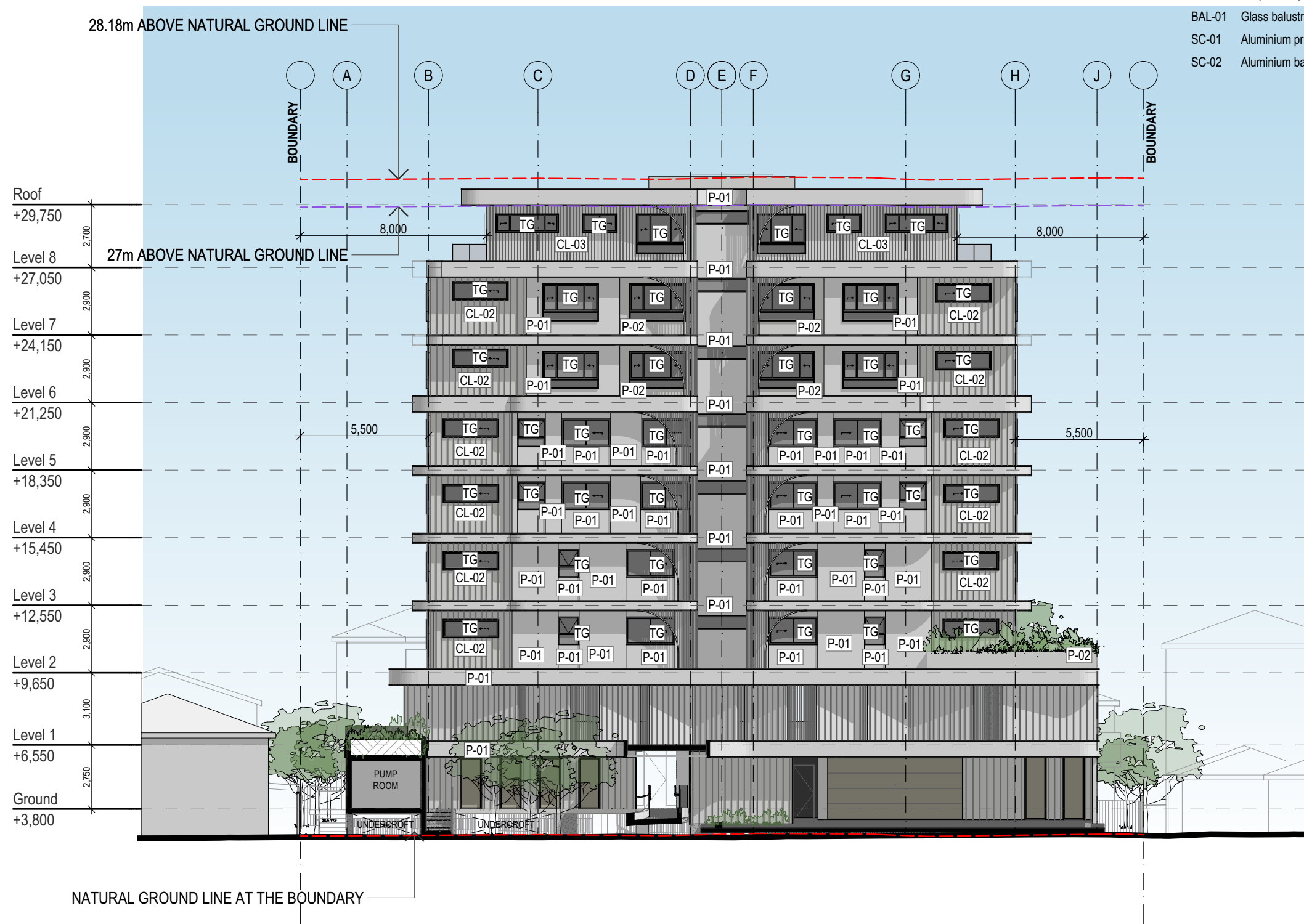


Project
Apartment Development
4-8 Sutton Street, Redcliffe, QLD

Drawing Title
Roof Plan

Scale @ A3	Drawn:	Checked:
1:200	RH, TN	EA
Project Number	Drawing Number	Issue
H3893SUT	TP210	O





FINISHES LEGEND

P-01	Rendered and painted Dulux Snowy Mountain White or similar
P-02	Rendered and painted Dulux Ghosting or similar
P-03	Rendered and painted fence wall
CL-01	Vertical cladding in P-01
CL-02	Vertical cladding in P-02
CL-03	Vertical board cladding
TG	Grey tinted glass
BAL-01	Glass balustrade
SC-01	Aluminium privacy screen
SC-02	Aluminium batten fence screen

TOWN PLANNING

General Notes

This drawing is Copyright © Any design or drawing is not to be reproduced, either in whole or part, without written permission by Hayes Anderson Lynch Architects Pty. Ltd. Confirm all dimensions on site. Do not scale off drawings. All levels are approximate only and are subject to confirmation by licenced surveyor. All workmanship, materials and construction to comply with the Queensland Building Act 1975, the Queensland Development Code, the Building Code of Australia 2019, Premises Standard and AS1428.1. Work to be carried out in a neat and appropriate manner. Where ambiguities or discrepancies exist, Hayes Anderson Lynch Architects Pty. Ltd. shall be contacted for clarification.

LEGEND

B	Basin
BAL	Balustrade (refer types)
Bath	Bath
BC	Barge capping
BG	Box gutter
COL	Column
Conc	Concrete
CT	Cook top
DCW	Discontinuous wall
DP	Downpipe (Refer Hydraulic Engineer's drawings)
DR	Drawers
DW	Dishwasher location
EG	Eaves gutter
F	Refrigerator position
FL	Structural floor level
FW	Floor waste gully
GB	Garden bed
HR	Selected handrail
L	Linon cupboard
OG	Obscure glass
OF	Overflow
P	Post
Pty	Pantry
RD	Roller door
RW	Retaining wall (Refer Structural Engineer's drawings)
Robe	Wardrobe
S	Sink
SD	Spoon Drain
SH	Sunhood
SHR	Shower
SP	Splitter
SPR	Spreader
ST	Stove top with range hood over
SW	Stormwater (Refer Civil Engineer's drawings)
T	Laundry tub
TB	Timber battens
TG	Trench grate
TGSIS	Tactile Ground Surface Indicator
WC	Toilet
WM	Washing machine location
WO	Wall oven

06.11.20	O	RFI response	EA
05.11.20	N	RFI response	EA
22.10.20	M	RFI response	EA
13.10.20	L	RFI response	EA
03.09.20	K	RFI response	EA
26.08.20	J	Prelim RFI response	EA
21.08.20	H	Prelim RFI response	EA
11.06.20	G	Client Issue	EA

Date	Issue Details	Checked
------	---------------	---------

HAYES ANDERSON LYNCH
ARCHITECTS PTY LTD

ARCHITECTS
TOWN PLANNERS
INTERIOR DESIGNERS

3 / 709 MAIN STREET
KANGAROO POINT QLD 4169

P + 61 7 3 8 5 2 3 1 9 0

E reception@halarchitects.com.au

W www.halarchitects.com.au



Project

Apartment Development
4-8 Sutton Street, Redcliffe, QLD

Drawing Title

West Elevation

Scale @ A3 Drawn: Checked:

1:200 RH, TN EA

Project Number Drawing Number Issue

H3893SUT TP401 O

E-05

West Elevation

1:200



E-03 Street Elevation
1:200

- FINISHES LEGEND**
- P-01 Rendered and painted Dulux Snowy Mountain White or similar
 - P-02 Rendered and painted Dulux Ghosting or similar
 - P-03 Rendered and painted fence wall
 - CL-01 Vertical cladding in P-01
 - CL-02 Vertical cladding in P-02
 - CL-03 Vertical board cladding
 - TG Grey tinted glass
 - BAL-01 Glass balustrade
 - SC-01 Aluminium privacy screen
 - SC-02 Aluminium batten fence screen

TOWN PLANNING

General Notes

This drawing is Copyright © Any design or drawing is not to be reproduced, either in whole or part, without written permission by Hayes Anderson Lynch Architects Pty. Ltd. Confirm all dimensions on site. Do not scale off drawings. All levels are approximate only and are subject to confirmation by licenced surveyor. All workmanship, materials and construction to comply with the Queensland Building Act 1975, the Queensland Development Code, the Building Code of Australia 2019, Premises Standard and AS1428.1. Work to be carried out in a neat and appropriate manner. Where ambiguities or discrepancies exist, Hayes Anderson Lynch Architects Pty. Ltd. shall be contacted for clarification.

LEGEND		
B	Basin	
BAL	Balustrade (refer types)	
Bath	Bathub	
BC	Barge capping	
BG	Box gutter	
CCL	Column	
Conc	Concrete	
CT	Cook top	
DCW	Discontinuous wall	
DP	Downpipe (Refer Hydraulic Engineer's drawings)	
DR	Drawers	
DW	Dishwasher location	
EG	Eaves gutter	
F	Refrigerator position	
FL	Structural floor level	
FW	Floor waste gully	
GB	Garden bed	
HR	Selected handrail	
L	Linen cupboard	
OG	Obscure glass	
OF	Overflow	
P	Post	
Pty	Parity	
RD	Roller door	
RW	Retaining wall (Refer Structural Engineer's drawings)	
Robe	Wardrobe	
S	Sink	
SD	Spoon Drain	
SH	Sunhood	
SHR	Shower	
SP	Splitter	
SPR	Spreader	
ST	Stove top with range hood over	
SW	Stormwater (Refer Civil Engineer's drawings)	
T	Laundry tub	
TB	Timber battens	
TG	Trench grate	
TGSI	Tactile Ground Surface Indicator	
WC	Toilet	
WM	Washing machine location	
WO	Wall oven	
06.11.20	O RFI response	EA
05.11.20	N RFI response	EA
22.10.20	M RFI response	EA
13.10.20	L RFI response	EA
03.09.20	K RFI response	EA
26.08.20	J Prelim RFI response	EA
21.08.20	H Prelim RFI response	EA
11.06.20	G Client Issue	EA

Date	Issue Details	Checked
------	---------------	---------

HAL
HAYES
ANDERSON
LYNCH
ARCHITECTS PTY LTD

ARCHITECTS
TOWN PLANNERS
INTERIOR DESIGNERS

3 / 709 MAIN STREET
KANGAROO POINT QLD 4169

P + 61 7 3 8 5 2 3 1 9 0
E reception@halarchitects.com.au
W www.halarchitects.com.au



Project
Apartment Development
4-8 Sutton Street, Redcliffe, QLD

Drawing Title
Sutton st Elevation

Scale @ A3	Drawn:	Checked:
1:200	RH, TN	EA
Project Number	Drawing Number	Issue
H3893SUT	TP402	O

FINISHES LEGEND

- P-01 Rendered and painted Dulux Snowy Mountain White or similar
- P-02 Rendered and painted Dulux Ghosting or similar
- P-03 Rendered and painted fence wall
- CL-01 Vertical cladding in P-01
- CL-02 Vertical cladding in P-02
- CL-03 Vertical board cladding
- TG Grey tinted glass
- BAL-01 Glass balustrade
- SC-01 Aluminium privacy screen
- SC-02 Aluminium batten fence screen

TOWN PLANNING

General Notes

This drawing is Copyright © Any design or drawing is not to be reproduced, either in whole or part, without written permission by Hayes Anderson Lynch Architects Pty. Ltd. Confirm all dimensions on site. Do not scale off drawings. All levels are approximate only and are subject to confirmation by licenced surveyor. All workmanship, materials and construction to comply with the Queensland Building Act 1975, the Queensland Development Code, the Building Code of Australia 2019, Premises Standard and AS1428.1. Work to be carried out in a neat and appropriate manner. Where ambiguities or discrepancies exist, Hayes Anderson Lynch Architects Pty. Ltd. shall be contacted for clarification.

LEGEND

- B Balustrade (refer types)
- BH Bath
- BC Barge capping
- BG Box gutter
- COL Column
- Conc Concrete
- CT Cook top
- DCW Discontinuous wall
- DP Downpipe (Refer Hydraulic Engineer's drawings)
- DR Drawers
- DW Dishwasher location
- EG Eaves gutter
- F Refrigerator position
- FL Structural floor level
- FW Floor waste gully
- GB Garden bed
- HR Selected handrail
- L Linen cupboard
- OG Obscure glass
- OF Overflow
- P Post
- Pty Parity
- RD Roller door
- RW Retaining wall (Refer Structural Engineer's drawings)
- Robe Wardrobe
- S Sink
- SD Spoon Drain
- SH Sunhood
- SHR Shower
- SP Splitter
- SPR Spreader
- ST Stove top with range hood over
- SW Stormwater (Refer Civil Engineer's drawings)
- T Laundry tub
- TB Timber battens
- TG Trench grate
- TGSis Tactile Ground Surface Indicator
- WC Toilet
- WM Washing machine location
- WO Wall oven

06.11.20	O	RFI response	EA
05.11.20	N	RFI response	EA
22.10.20	M	RFI response	EA
13.10.20	L	RFI response	EA
03.09.20	K	RFI response	EA
26.08.20	J	Prelim RFI response	EA
21.08.20	H	Prelim RFI response	EA
11.06.20	G	Client Issue	EA

Date	Issue Details	Checked
------	---------------	---------



**HAYES
ANDERSON
LYNCH**
ARCHITECTS PTY LTD

ARCHITECTS
TOWN PLANNERS
INTERIOR DESIGNERS

3 / 709 MAIN STREET
KANGAROO POINT QLD 4169

P + 61 7 3 8 5 2 3 1 9 0

E reception@halarchitects.com.au

W www.halarchitects.com.au



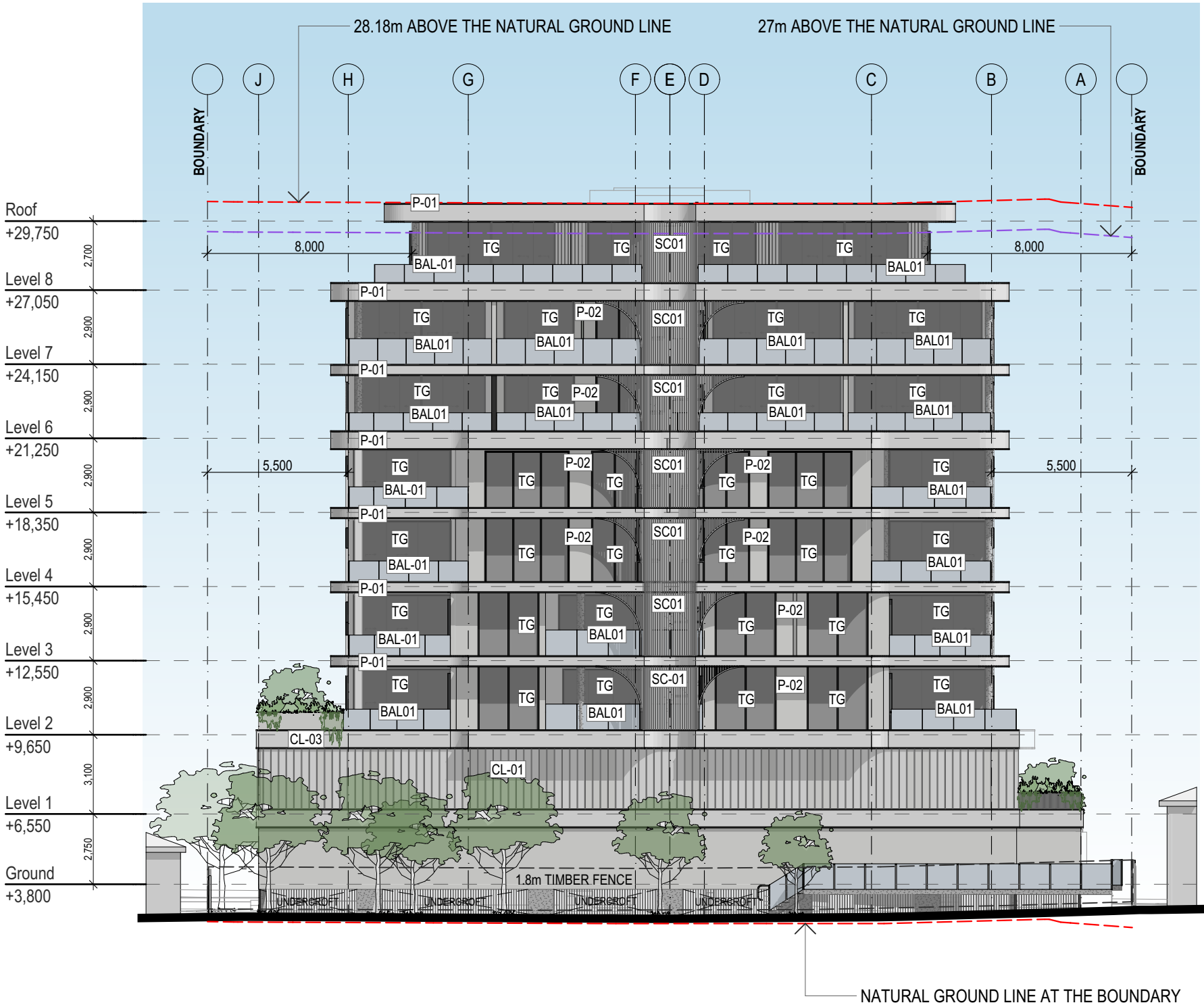
Project

Apartment Development
4-8 Sutton Street, Redcliffe, QLD

Drawing Title

East Elevation

Scale @ A3	Drawn:	Checked:
1:200	RH, TN	EA
Project Number	Drawing Number	Issue
H3893SUT	TP403	O



E-01 East Elevation
1:200

SEND

11.20	O	RFI response	EA
11.20	N	RFI response	EA
11.20	M	RFI response	EA
11.20	L	RFI response	EA
09.20	K	RFI response	EA
08.20	J	Prelim RFI response	EA
08.20	H	Prelim RFI response	EA
06.20	G	Client Issue	EA

ate	Issue Details	Checked
-----	---------------	---------



/ 709 MAIN STREET
ANGAROO POINT QLD 4169



North Elevation

Scale @ A3	Drawn:	Checked:
200	RH, TN	EA
Project Number	Drawing Number	Issue
3893SUT	TP404	0

P-01	Rendered and painted Dulux Snowy Mountain White or similar
P-02	Rendered and painted Dulux Ghosting or similar
P-03	Rendered and painted fence wall
CL-01	Vertical cladding in P-01
CL-02	Vertical cladding in P-02
CL-03	Vertical board cladding
TG	Grey tinted glass
BAL-01	Glass balustrade
SC-01	Aluminium privacy screen
SC-02	Aluminium batten fence screen



General Notes

LEGEND

06.11.20	O	RFI response	EA
05.11.20	N	RFI response	EA
22.10.20	M	RFI response	EA
13.10.20	L	RFI response	EA
03.09.20	K	RFI response	EA
26.08.20	J	Prelim RFI response	EA
21.08.20	H	Prelim RFI response	EA
11.06.20	G	Client Issue	EA

www.ck12.org



3 / 709 MAIN STREET
KANGAROO POINT QLD 4169

reception@halarchitects.com.au



Member
Australian
Institute of
Architects

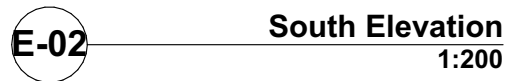
Apartment Development

4-8 Sutton Street, Redcliffe, QLD

South Elevation

Scale @ A3	Drawn:	Checked:
1:200	RH, TN	EA
Project Number	Drawing Number	Issue
43893SUT	TP405	0

P-01	Rendered and painted Dulux Snowy Mountain White or similar
P-02	Rendered and painted Dulux Ghosting or similar
P-03	Rendered and painted fence wall
CL-01	Vertical cladding in P-01
CL-02	Vertical cladding in P-02
CL-03	Vertical board cladding
TG	Grey tinted glass
BAL-01	Glass balustrade
SC-01	Aluminium privacy screen
SC-02	Aluminium batten fence screen



General Notes

This drawing is Copyright © Any design or drawing is not to be reproduced, either in whole or part, without written permission by Hayes Anderson Lynch Architects Pty. Ltd. Confirm all dimensions on site. Do not scale off drawings. All levels are approximate only and are subject to confirmation by licenced surveyor. All workmanship, materials and construction to comply with the Queensland Building Act 1975, the Queensland Development Code, the Building Code of Australia 2019, Premises Standard and AS1428.1. Work to be carried out in a neat and appropriate manner. Where ambiguities or discrepancies exist, Hayes Anderson Lynch Architects Pty. Ltd. shall be contacted for clarification.

LEGEND

B	Basin
BAL	Balustrade (refer types)
BB	Bath
BC	Barge capping
BG	Box gutter
COL	Column
Conc	Concrete
CT	Cook top
DCW	Discontinuous wall
DP	Downpipe (Refer Hydraulic Engineer's drawings)
DR	Drawers
DW	Dishwasher location
EG	Eaves gutter
F	Refrigerator position
FL	Structural floor level
FW	Floor waste gully
GB	Garden bed
HR	Selected handrail
L	Linon cupboard
OG	Obscure glass
OF	Overflow
P	Post
Pty	Parity
RD	Roller door
RW	Retaining wall (Refer Structural Engineer's drawings)
Robe	Wardrobe
S	Sink
SD	Spoon Drain
SH	Sunhood
SHR	Shower
SP	Splitter
SPR	Spreader
ST	Stove top with range hood over
SW	Stormwater (Refer Civil Engineer's drawings)
T	Laundry tub
TB	Timber battens
TG	Trench grate
TGSis	Tactile Ground Surface Indicator
WC	Toilet
WM	Washing machine location
WO	Wall oven

06.11.20	O	RFI response	EA
05.11.20	N	RFI response	EA
22.10.20	M	RFI response	EA
13.10.20	L	RFI response	EA
03.09.20	K	RFI response	EA
26.08.20	J	Prelim RFI response	EA
21.08.20	H	Prelim RFI response	EA
11.06.20	G	Client Issue	EA

Date	Issue Details	Checked
------	---------------	---------



ARCHITECTS
TOWN PLANNERS
INTERIOR DESIGNERS

3 / 709 MAIN STREET
KANGAROO POINT QLD 4169

P + 61 7 3 8 5 2 3 1 9 0
E reception@halarchitects.com.au
W www.halarchitects.com.au



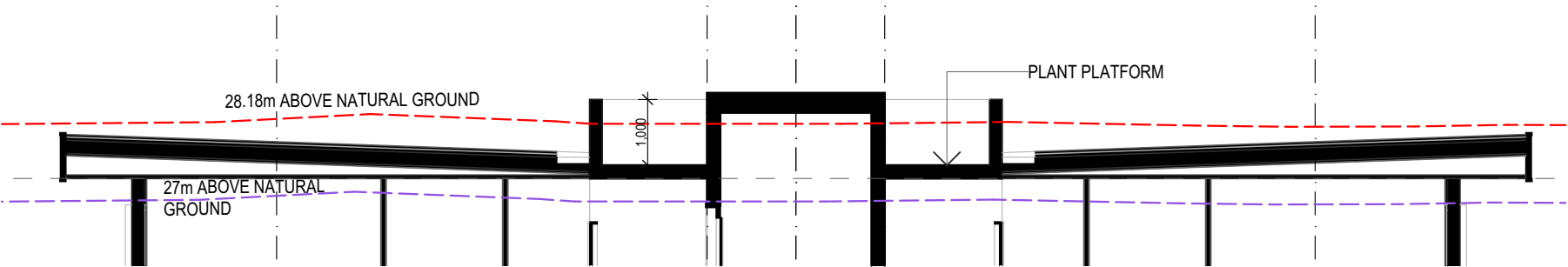
Project
Apartment Development
4-8 Sutton Street, Redcliffe, QLD

Drawing Title
Section AA

Scale @ A3	Drawn: RH, TN	Checked: EA
Project Number H3893SUT	Drawing Number TP501	Issue O



Section AA
1:200



Roof Section
1:100

General Notes

This drawing is Copyright © Any design or drawing is not to be reproduced, either in whole or part, without written permission by Hayes Anderson Lynch Architects Pty. Ltd. Confirm all dimensions on site. Do not scale off drawings. All levels are approximate only and are subject to confirmation by licenced surveyor. All workmanship, materials and construction to comply with the Queensland Building Act 1975, the Queensland Development Code, the Building Code of Australia 2019, Premises Standard and AS1428.1. Work to be carried out in a neat and appropriate manner. Where ambiguities or discrepancies exist, Hayes Anderson Lynch Architects Pty. Ltd. shall be contacted for clarification.

LEGEND

B	Basin
BAL	Balustrade (refer types)
Bath	Bathub
BC	Barge capping
BG	Box gutter
COL	Column
Conc	Concrete
CT	Cook top
DCW	Discontinuous wall
DP	Downdrip (Refer Hydraulic Engineer's drawings)
DR	Drawers
DW	Dishwasher location
EG	Eaves gutter
F	Refrigerator position
FL	Structural floor level
FW	Floor waste gully
GB	Garden bed
HR	Selected handrail
L	Linen cupboard
OG	Obscure glass
OF	Overflow
P	Post
Pty	Partly
RD	Roller door
RW	Retaining wall (Refer Structural Engineer's drawings)
Robe	Wardrobe
S	Sink
SD	Spoon Drain
SH	Sunhood
SHR	Shower
SP	Splitter
SPR	Spreader
ST	Stove top with range hood over
SW	Stormwater (Refer Civil Engineer's drawings)
T	Laundry tub
TB	Timber battens
TG	Trench grate
TGSis	Tactile Ground Surface Indicator
WC	Toilet
WM	Washing machine location
WO	Wall oven

06.11.20	O	RFI response	EA
05.11.20	N	RFI response	EA
22.10.20	M	RFI response	EA
13.10.20	L	RFI response	EA
03.09.20	K	RFI response	EA
26.08.20	J	Prelim RFI response	EA
21.08.20	H	Prelim RFI response	EA
11.06.20	G	Client Issue	EA

Date	Issue Details	Checked
------	---------------	---------



**HAYES
ANDERSON
LYNCH**
ARCHITECTS PTY LTD

ARCHITECTS
TOWN PLANNERS
INTERIOR DESIGNERS

3 / 709 MAIN STREET
KANGAROO POINT QLD 4169

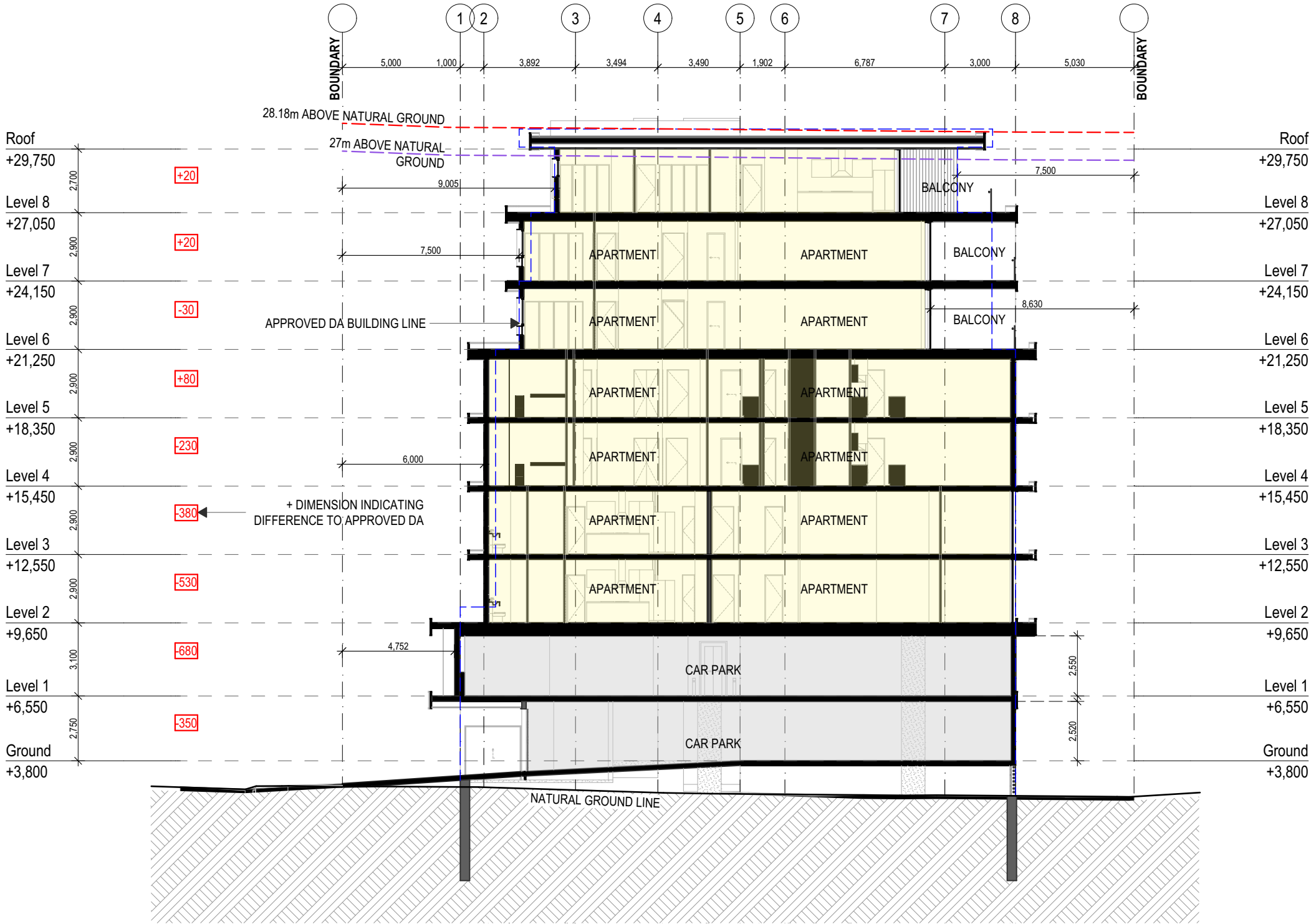
P + 61 7 3 8 5 2 3 1 9 0
E reception@halarchitects.com.au
W www.halarchitects.com.au



Project
Apartment Development
4-8 Sutton Street, Redcliffe, QLD

Drawing Title
Section BB

Scale @ A3 1:200	Drawn: RH, TN	Checked: EA
Project Number H3893SUT	Drawing Number TP508	Issue O



Section BB
1:200

General Notes

This drawing is Copyright © Any design or drawing is not to be reproduced, either in whole or part, without written permission by Hayes Anderson Lynch Architects Pty. Ltd. Confirm all dimensions on site. Do not scale off drawings. All levels are approximate only and are subject to confirmation by licenced surveyor. All workmanship, materials and construction to comply with the Queensland Building Act 1975, the Queensland Development Code, the Building Code of Australia 2019, Premises Standard and AS1428.1. Work to be carried out in a neat and appropriate manner. Where ambiguities or discrepancies exist, Hayes Anderson Lynch Architects Pty. Ltd. shall be contacted for clarification.

LEGEND

B	Basin		
BAL	Balustrade (refer types)		
Bath	Bathub		
BC	Barge capping		
BG	Box gutter		
COL	Column		
Conc	Concrete		
CT	Cook top		
CDW	Discontinuous wall		
DP	Downpipe (Refer Hydraulic Engineer's drawings)		
DR	Drawers		
DW	Dishwasher location		
EG	Eaves gutter		
F	Refrigerator position		
FL	Structural floor level		
FW	Floor waste gully		
GB	Garden bed		
HR	Selected handrail		
L	Linen cupboard		
OG	Obscure glass		
OF	Overflow		
P	Post		
Pty	Pantry		
RD	Roller door		
RW	Retaining wall (Refer Structural Engineer's drawings)		
Robe	Wardrobe		
S	Sink		
SD	Spoon Drain		
SH	Sunhood		
SHR	Shower		
SP	Splitter		
SPR	Spreader		
ST	Slope top with range hood over		
SW	Stormwater (Refer Civil Engineer's drawings)		
T	Laundry tub		
TB	Timber battens		
TG	Trench grate		
TGSis	Tactile Ground Surface Indicator		
WC	Toilet		
WM	Washing machine location		
WO	Wall oven		
06.11.20	O	RFI response	EA
05.11.20	N	RFI response	EA
22.10.20	M	RFI response	EA
13.10.20	L	RFI response	EA
03.09.20	K	RFI response	EA
26.08.20	J	Prelim RFI response	EA
21.08.20	H	Prelim RFI response	EA
11.06.20	G	Client Issue	EA

Date	Issue Details	Checked
------	---------------	---------



**HAYES
ANDERSON
LYNCH**
ARCHITECTS PTY LTD

ARCHITECTS
TOWN PLANNERS
INTERIOR DESIGNERS

3 / 709 MAIN STREET
KANGAROO POINT QLD 4169

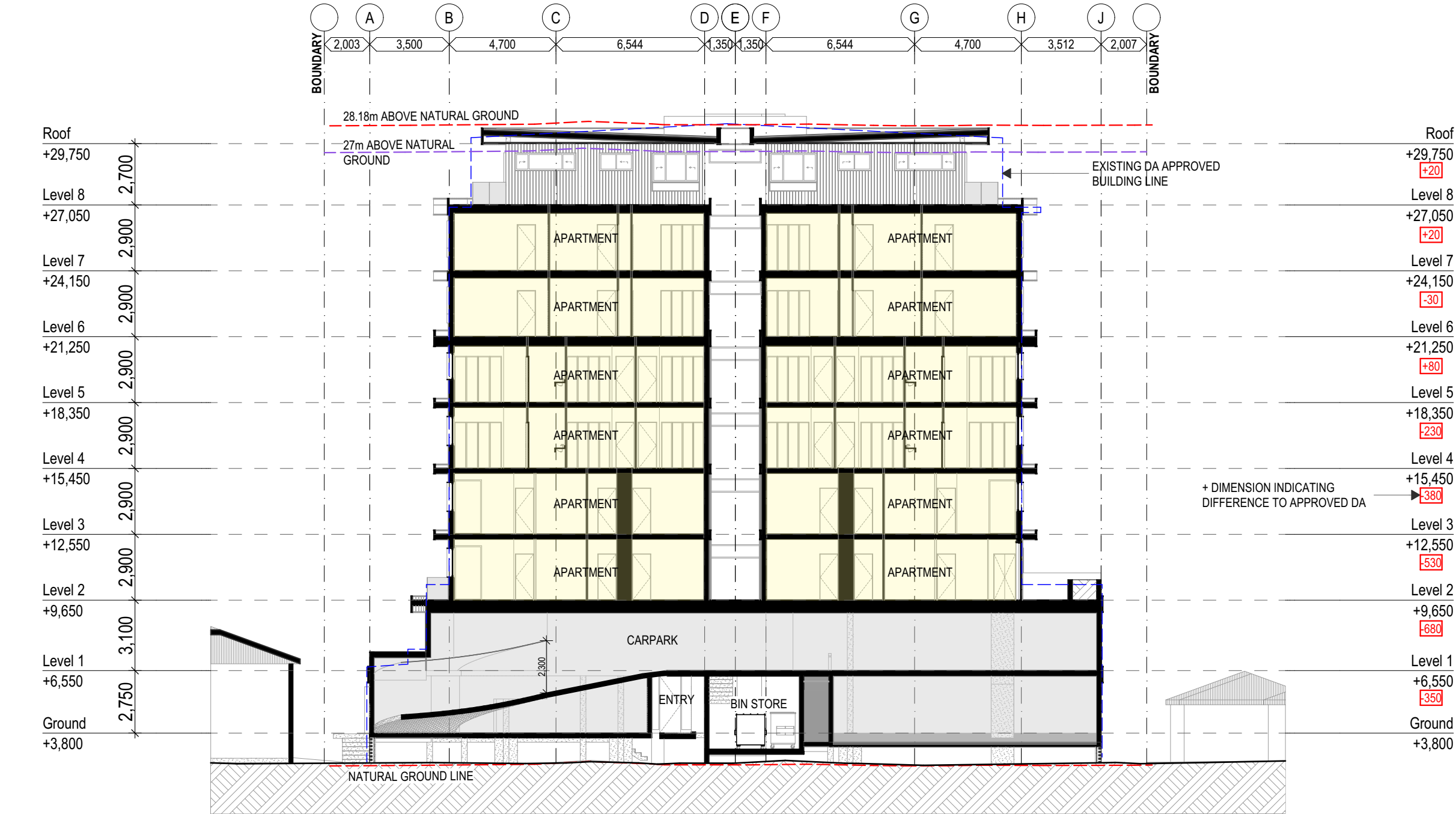
P + 61 7 3 8 5 2 3 1 9 0
E reception@halarchitects.com.au
W www.halarchitects.com.au



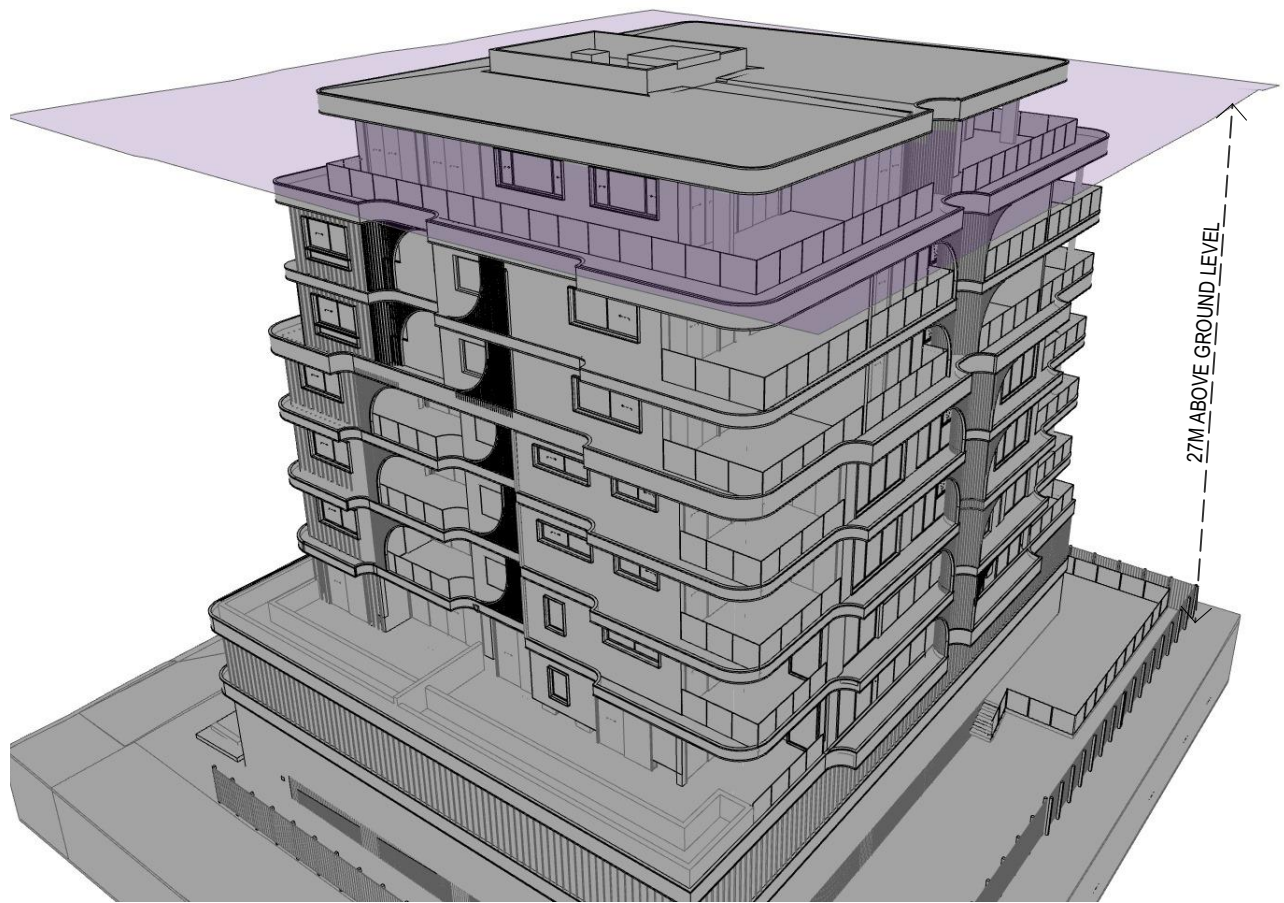
Project
Apartment Development
4-8 Sutton Street, Redcliffe, QLD

Drawing Title
Section CC

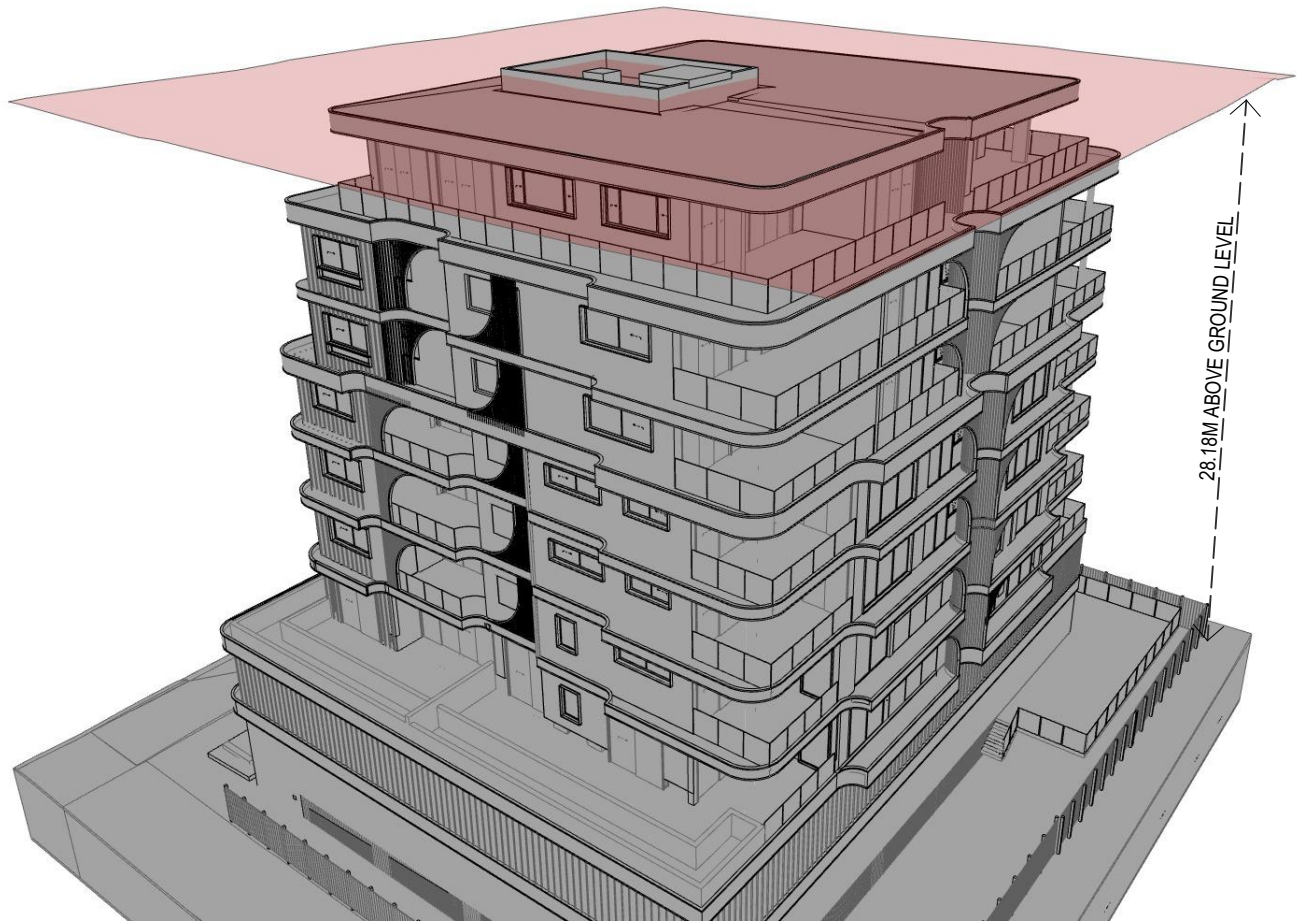
Scale @ A3	Drawn:	Checked:
1:200	RH, TN	EA
Project Number	Drawing Number	Issue
H3893SUT	TP509	O



Section C
1:200



27m Above NGL



28.18m Above NGL

TOWN PLANNING

General Notes

This drawing is Copyright © Any design or drawing is not to be reproduced, either in whole or part, without written permission by Hayes Anderson Lynch Architects Pty. Ltd.
Confirm all dimensions on site.
Do not scale off drawings.
All levels are approximate only and are subject to confirmation by licenced surveyor.
All workmanship, materials and construction to comply with the Queensland Building Act 1975, the Queensland Development Code, the Building Code of Australia 2019, Premises Standard and AS1428.1.
Work to be carried out in a neat and appropriate manner.
Where ambiguities or discrepancies exist, Hayes Anderson Lynch Architects Pty. Ltd. shall be contacted for clarification.

LEGEND

B	Basin
BAL	Balustrade (refer types)
Bath	Bathub
BC	Barge capping
BG	Box gutter
COL	Column
Conc	Concrete
CT	Cook top
DCW	Discontinuous wall
DP	Downpipe (Refer Hydraulic Engineer's drawings)
DR	Drawers
DW	Dishwasher location
EG	Eaves gutter
F	Refrigerator position
FL	Structural floor level
FW	Floor waste gully
GB	Garden bed
HR	Selected handrail
L	Linen cupboard
OG	Obscure glass
OF	Overflow
P	Post
Pty	Parity
RD	Roller door
RW	Retaining wall (Refer Structural Engineer's drawings)
Robe	Wardrobe
S	Sink
SD	Spoon Drain
SH	Sunhood
SHR	Shower
SP	Splitter
SPR	Spreader
ST	Stove top with range hood over
SW	Stormwater (Refer Civil Engineer's drawings)
T	Laundry tub
TB	Timber battens
TG	Trench grate
TGSis	Tactile Ground Surface Indicator
WC	Toilet
WM	Washing machine location
WO	Wall oven

06.11.20	O	RFI response	EA
05.11.20	N	RFI response	EA
22.10.20	M	RFI response	EA
13.10.20	L	RFI response	EA
03.09.20	K	RFI response	EA
26.08.20	J	Prelim RFI response	EA
21.08.20	H	Prelim RFI response	EA
11.06.20	G	Client Issue	EA

Date	Issue Details	Checked
------	---------------	---------



**HAYES
ANDERSON
LYNCH**
ARCHITECTS PTY LTD

ARCHITECTS
TOWN PLANNERS
INTERIOR DESIGNERS

3 / 709 MAIN STREET
KANGAROO POINT QLD 4169

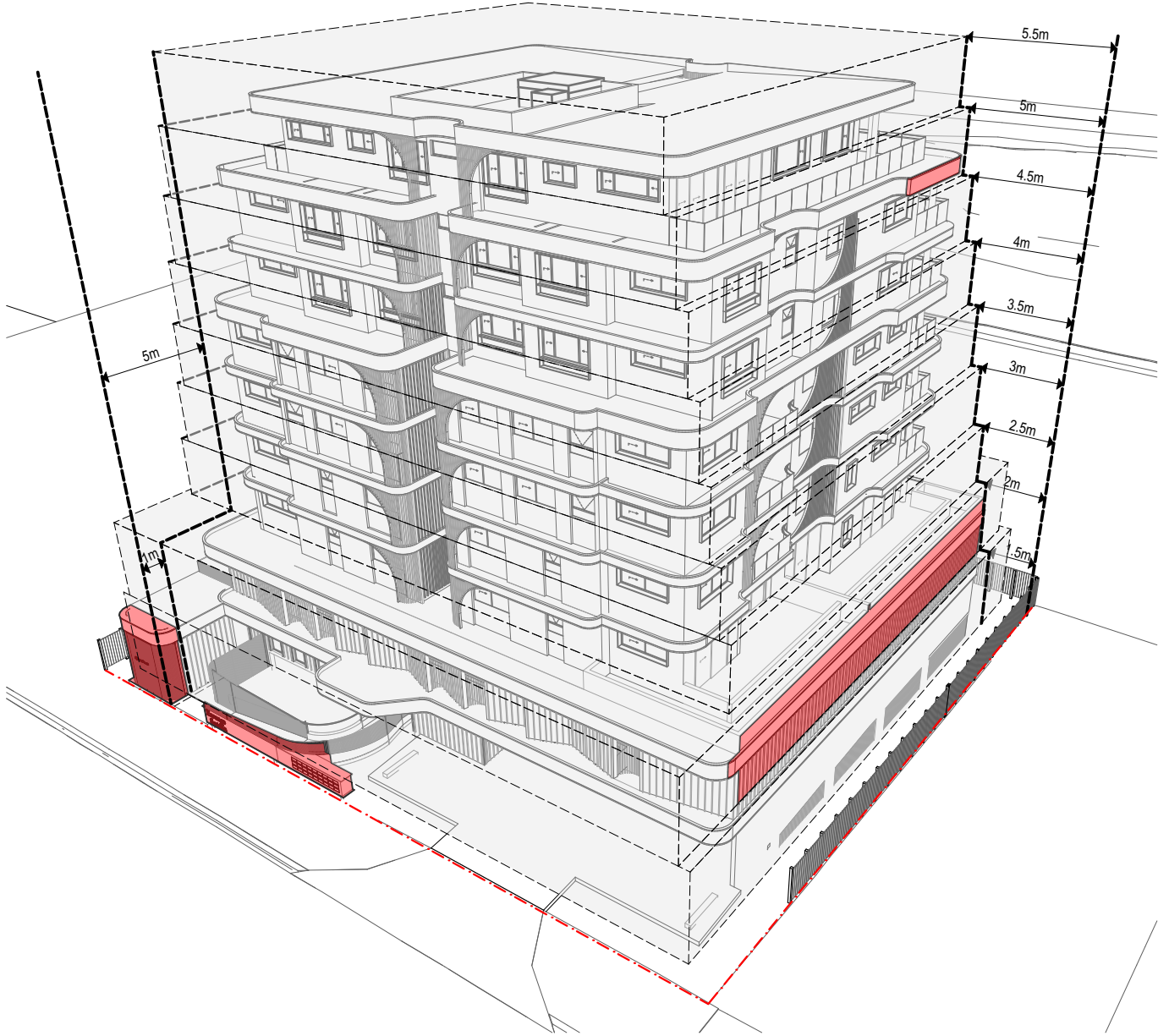
P + 61 7 3 8 5 2 3 1 9 0
E reception@halarchitects.com.au
W www.halarchitects.com.au



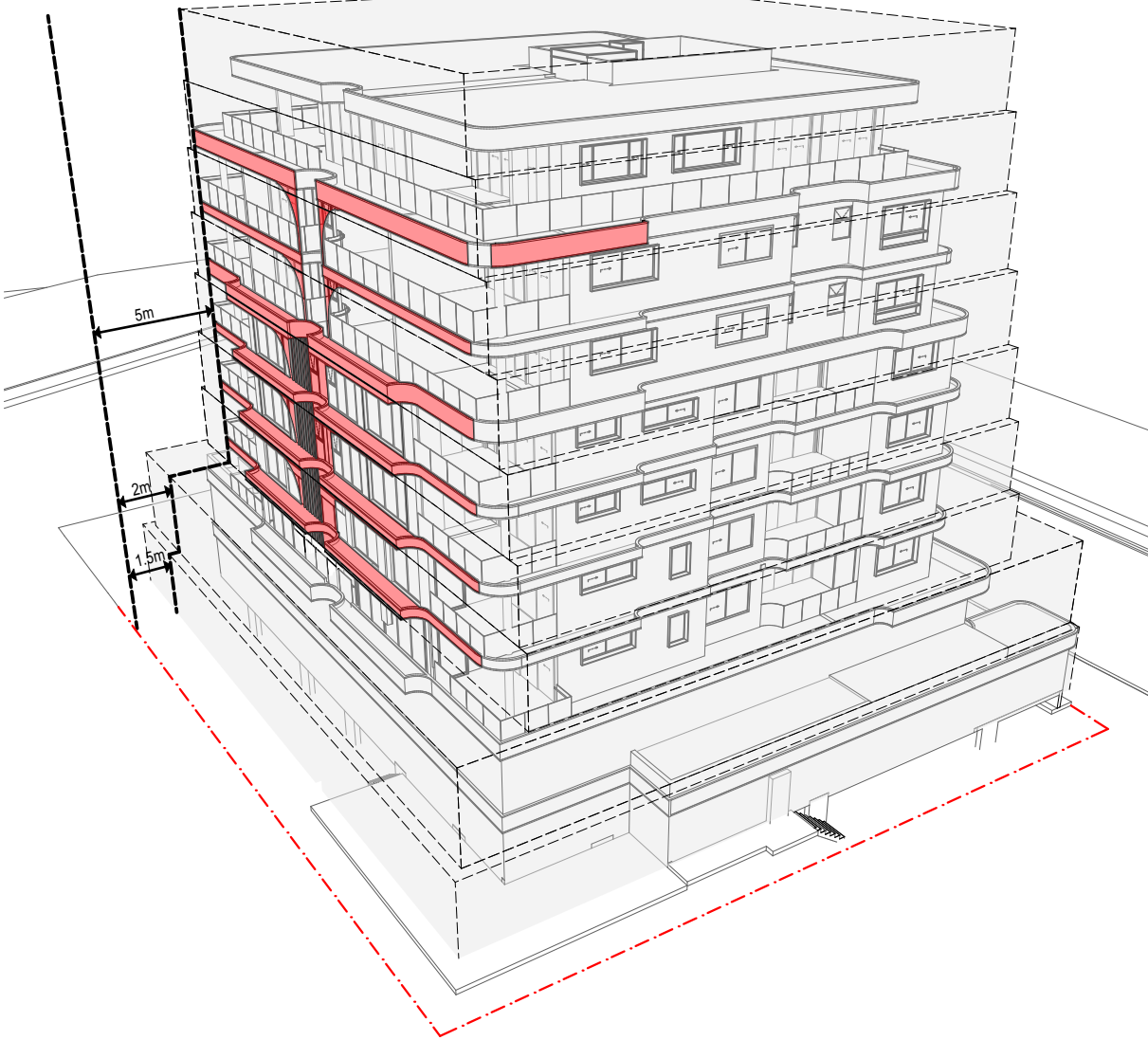
Project
Apartment Development
4-8 Sutton Street, Redcliffe, QLD

Drawing Title
Building Height 3Ds

Scale @ A3	Drawn:	Checked:
1:285.71	RH, TN	EA
Project Number	Drawing Number	Issue
H3893SUT	TP602	O



Setback Comparison - West View



Setback Comparison - East View

LEGEND

- Area within Allowable setbacks
- Areas in proposed developemt that protrudes the allowable setbacks

TOWN PLANNING

General Notes

This drawing is Copyright © Any design or drawing is not to be reproduced, either in whole or part, without written permission by Hayes Anderson Lynch Architects Pty. Ltd. Confirm all dimensions on site. Do not scale off drawings. All levels are approximate only and are subject to confirmation by licenced surveyor. All workmanship, materials and construction to comply with the Queensland Building Act 1975, the Queensland Development Code, the Building Code of Australia 2019, Premises Standard and AS1428.1. Work to be carried out in a neat and appropriate manner. Where ambiguities or discrepancies exist, Hayes Anderson Lynch Architects Pty. Ltd. shall be contacted for clarification.

LEGEND		
B	Basin	
BAL	Balustrade (refer types)	
Bath	Bathub	
BC	Barge capping	
BG	Box gutter	
CCL	Column	
Conc	Concrete	
CT	Cook top	
DCW	Discontinuous wall	
DP	Downpipe (Refer Hydraulic Engineer's drawings)	
DR	Drawers	
DW	Dishwasher location	
EG	Eaves gutter	
F	Refrigerator position	
FL	Structural floor level	
FW	Floor waste gully	
GB	Garden bed	
HR	Selected handrail	
L	Linen cupboard	
OG	Obscure glass	
OF	Overflow	
P	Post	
Pty	Parity	
RD	Roller door	
RW	Retaining wall (Refer Structural Engineer's drawings)	
Robe	Wardrobe	
S	Sink	
SD	Spoon Drain	
SH	Sunhood	
SHR	Shower	
SP	Splitter	
SPR	Spreader	
ST	Stove top with range hood over	
SW	Stormwater (Refer Civil Engineer's drawings)	
T	Laundry tub	
TB	Timber battens	
TG	Trench grate	
TGSIS	Tactile Ground Surface Indicator	
WC	Toilet	
WM	Washing machine location	
WO	Wall oven	
06.11.20	O	RFI response EA
05.11.20	N	RFI response EA
22.10.20	M	RFI response EA
13.10.20	L	RFI response EA
03.09.20	K	RFI response EA
26.08.20	J	Prelim RFI response EA
21.08.20	H	Prelim RFI response EA
11.06.20	G	Client Issue EA

Date Issue Details Checked



ARCHITECTS
TOWN PLANNERS
INTERIOR DESIGNERS

3 / 709 MAIN STREET
KANGAROO POINT QLD 4169

P + 61 7 3 8 5 2 3 1 9 0
E reception@halarchitects.com.au
W www.halarchitects.com.au



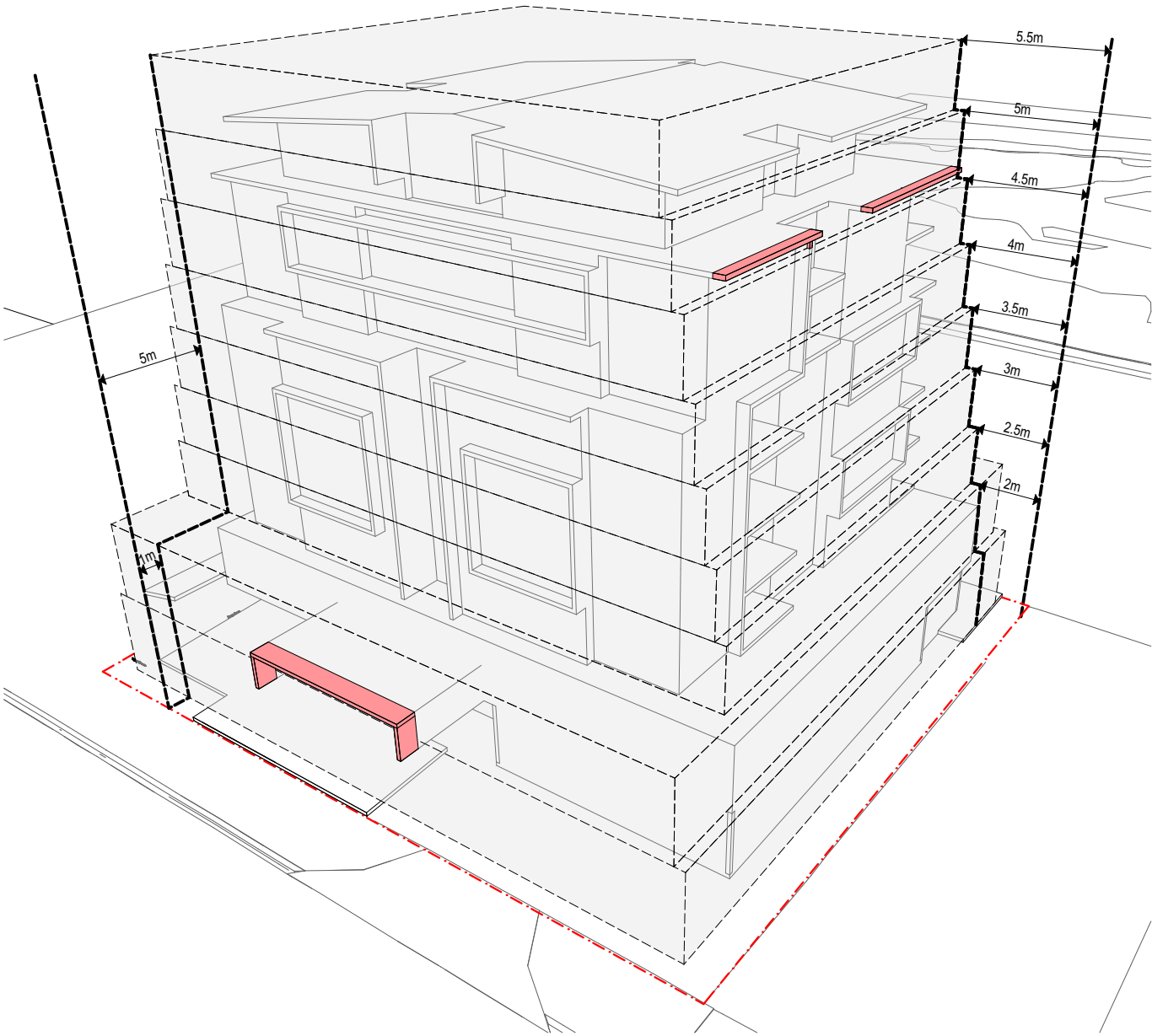
Project
Apartment Development
4-8 Sutton Street, Redcliffe, QLD

Drawing Title
Proposed Setback 3Ds

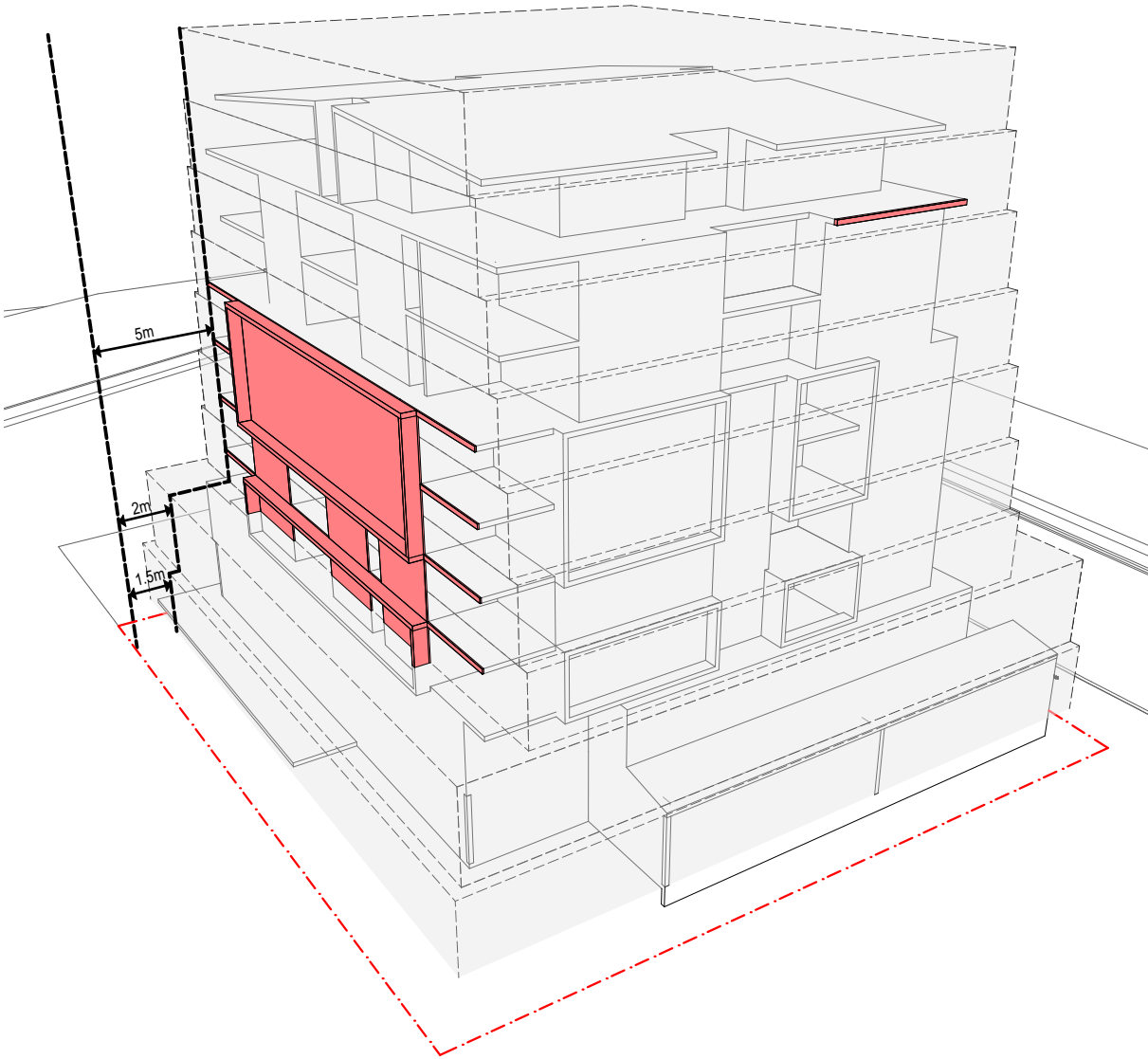
Scale @ A3	Drawn:	Checked:
1:181.82	RH, TN	EA
Project Number	Drawing Number	Issue
H3893SUT	TP603	O

LEGEND

- Area within Allowable setbacks
- Areas in approved developemt that protrudes the allowable setbacks



Setback Comparison -West View - Current DA



Setback Comparison - East View - Current DA

TOWN PLANNING

General Notes

This drawing is Copyright © Any design or drawing is not to be reproduced, either in whole or part, without written permission by Hayes Anderson Lynch Architects Pty. Ltd. Confirm all dimensions on site. Do not scale off drawings. All levels are approximate only and are subject to confirmation by licenced surveyor. All workmanship, materials and construction to comply with the Queensland Building Act 1975, the Queensland Development Code, the Building Code of Australia 2019, Premises Standard and AS1428.1. Work to be carried out in a neat and appropriate manner. Where ambiguities or discrepancies exist, Hayes Anderson Lynch Architects Pty. Ltd. shall be contacted for clarification.

LEGEND

- B Basin
- BAL Balustrade (refer types)
- Bath Bath
- BC Barge capping
- BG Box gutter
- CCL Column
- Conc Concrete
- CT Cook top
- DCW Discontinuous wall
- DP Downpipe (Refer Hydraulic Engineer's drawings)
- DR Drawers
- DW Dishwasher location
- EG Eaves gutter
- F Refrigerator position
- FL Structural floor level
- FW Floor waste gully
- GB Garden bed
- HR Selected handrail
- L Linen cupboard
- OG Obscure glass
- OF Overflow
- P Post
- Pty Parity
- RD Roller door
- RW Retaining wall (Refer Structural Engineer's drawings)
- Robe Wardrobe
- S Sink
- SD Spoon Drain
- SH Sunhood
- SHR Shower
- SP Splitter
- SPR Spreader
- ST Stove top with range hood over
- SW Stormwater (Refer Civil Engineer's drawings)
- T Laundry tub
- TB Timber battens
- TG Trench grate
- TGSis Tactile Ground Surface Indicator
- WC Toilet
- WM Washing machine location
- WO Wall oven

06.11.20	O	RFI response	EA
05.11.20	N	RFI response	EA
22.10.20	M	RFI response	EA
13.10.20	L	RFI response	EA
03.09.20	K	RFI response	EA
26.08.20	J	Prelim RFI response	EA
21.08.20	H	Prelim RFI response	EA
11.06.20	G	Client Issue	EA

Date	Issue Details	Checked
------	---------------	---------



ARCHITECTS
TOWN PLANNERS
INTERIOR DESIGNERS

3 / 709 MAIN STREET
KANGAROO POINT QLD 4169

P + 61 7 3 8 5 2 3 1 9 0
E reception@halarchitects.com.au
W www.halarchitects.com.au



Project
Apartment Development
4-8 Sutton Street, Redcliffe, QLD

Drawing Title
Existing DA Setback 3Ds

Scale @ A3	Drawn:	Checked:
1:181.82	RH, TN	EA
Project Number	Drawing Number	Issue
H3893SUT	TP604	O